

CONTENTS

33 Harmonizing with the tradition and modern era, **Culture Tour**

48 Living with nature, **Ecological Tour**

61 Walking, seeing, and feeling together, **Pedestrian Tour**

73 For joyous tour at Daejeon **Information for Tourists**

Must-visit

Tourist destinations in Daejeon



Capturing
Daejeon



• Expo Bridge

Tourist Destinations in Daejeon



Daedong Haneul Park

With its "Rainbow Project" selected as a city regeneration project in 2008, the park became the venue for an art program to build structures and paint murals, turning into a mural village. On top of the hill in particular is an exotic windmill observatory where you can enjoy the nightscape of downtown.

T 042) 861-1330

A 182, Dongdaeyeon-ro 110beon-gil, Dong-gu



Temiorae

(Historic Chungcheongnam-do governor's residence)

It was established in 1932 when the Chungcheongnam-do government complex moved from Gongju. Chungcheongnam-do to Daejeon. Used as a temporary residence for President Syngman Rhee, who took refuge in Daejeon during the Korean War, it was also the place where the special announcement was made on June 27, 1950. As one of the sites that went through the turbulence of Korea's modern history, it became open to the public with the new name "Temiorae" following total renovation and repair.

T 042) 335-5701

A 27, Bomun-ro 205beon-gil, Jung-gu



Daejeon Modern History Exhibition Hall

(Historic Chungcheongnam-do Provincial Government Office Building)

It is the oldest among the modern office buildings preserved in Daejeon. Built in 1932, it was used as the provincial government office building for 80 years before the government was moved to Naepo New Town. It is now used as the Daejeon Modern History Exhibition Hall. As a historic symbol, it has also been used as a filming site of films and TV series such as *The Attorney* and *Mr. Sunshine*.

T 042) 270-4535~8

A 101, Jungang-ro, Jung-gu



Ihyeon-dong Dume Village

(Colorful Pumpkin Village)

The mountain behind the village has been called "Baesan," which means "pumpkin mountain," as it looks like a round, broad pumpkin. The name of the village, "Ihyeon," was named after Baeogae, the hill that connects to the mountain and means "pumpkin hill." The village has been recently called Dume Village as well. It is a beautiful, clean village near Gyejoksan Mountain and Daechongho Lake that offers the warm and friendly ambiance associated with Korean farming villages.

T 042) 250-1237

A 3, Daechonghosu-ro 1326beon-gil, Daedeok-gu



T 042) 580-4820

A 70, Sajeonggongwon-ro, Jung-gu

Daejeon O-World

Another world to enjoy nature downtown. The largest theme park in the central and southern parts of Korea. Daejeon O-World is a complex composed of Zoo Land, Flower Land, Joy Land, Bird Land, and Night Universe where you can have fun with the whole family. Never miss Night Universe. The park shows a magical transformation at night.

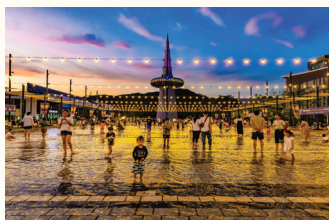


T 042)288-8300

A 79, Ppurigongwon-ro, Jung-gu

Ppuri Park

It is the only park in Korea with hyo, or filial piety, as theme. It features a special sculpture on which the origins of 244 Korean family names are inscribed and the Korean Genealogy Museum where you can look into the system and history of genealogy. It has a stage along the stream, a lawn, an observatory, a therapeutic forest, and a camping site in a pine forest where you can put up a tent. At night, the atmosphere of the park is enhanced with lights, including those in Galaxy Tunnel.

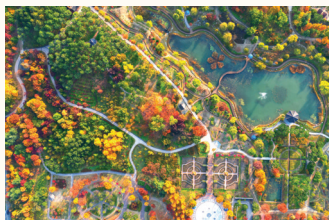


T 042) 250-1111

A 480, Daedeok-daero, Yuseong-gu

Expo Science Park

The Daejeon Expo Science Park is a theme park to commemorate the successful holding of Daejeon International Exposition held in the city in 1993. It consists of the Daejeon Expo Commemorative Center, World Expo Souvenirs Museum, and Advanced Science Museum and holds a variety of events all year round. Hanbit Tower, its symbolic tower, is where you can see the major areas of Daejeon from up high.



T 042) 270-8452, 8454~5

A 169, Dunsan-daero, Seo-gu

Hanbat Arboretum

Hanbat Arboretum is one of the largest man-made urban arboretums in Korea. It is a space for preserving the genes of diverse plants, a venue for adolescents' nature experience, and a spot for citizens' unwinding and relaxation. It is largely divided into three areas: East Garden, West Garden, and Tropical Garden. It offers a forest expounder program on a reservation basis.



T 042) 623-9909

A 453-1 Jang-dong, Daedeok-gu

Gyejoksan Mountain Red Clay Trail

The 14.5-km forest trail of Gyejoksan Mountain was covered with 20,000 tons of red clay, turning into a red clay trail. Here, you can enjoy bare-foot walking from spring to autumn. Feeling the soft red clay with the soles of your feet will be like getting a relaxing body massage. Forest bathing is a bonus.



T 042) 250-1236(Management Office)

A 36. Daecheong-ro, Daedeok-gu
(Visitor Support Center)

Daecheongho Obaengni-gil

As a water source in the regions of Daejeon and Chungcheong-do, Daecheongho Lake is the third largest lake in Korea. Deep blue and wide, the lake is surrounded by mountains that stand 200-300 meters high and wear different colors each season to provide stunning landscape. The sea of clouds it offers at sunrise in the cold season is a real splendor. Daecheongho Lake is also popular among photographers as the habitat of migratory birds and for its fabulous scenery.

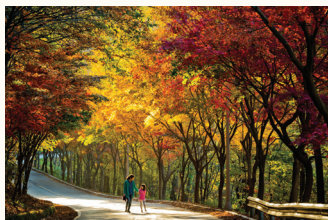


T 042) 270-7883

A 461. Jangan-ro, Seo-gu

Jangtaesan Recreational Forest

It is a recreational forest where you can enjoy forest bathing amid exotic scenery formed by the native trees of Jangtaesan Mountain, such as chestnut trees, nut pines, ginkgos, pines, hardy rubber trees, and foreign trees such as metasequoia from the United States and spruce from Germany.



T 042) 270-5582

A Bomunsangongwon-ro, Jung-gu

Daejeon Dullesan Trail

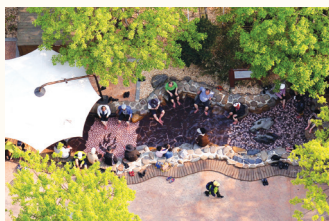
Daejeon Dullesan Trail is a mountain trail that connects the mountains surrounding the city of Daejeon. The trail begins at Bomunsan Mountain and continues through Maninsan Mountain, Sikjongsan Mountain, and Gyejoksan Mountain. The first section of the trail covers 9.3km, beginning at Youth Square in Bomunsan Mountain. It connects Gochoksa Temple, Sirubong Peak of Bomunsan Mountain, a heliport, a crossroads at Bomunsan Mountain, the upper part of Guwan Tunnel, Odosan Mountain, a steel tower, and Geumdong Pass.



T 042) 608-6574
A 80. Dongchundang-ro, Daedeok-gu

Dongchundang House

Dongchundang House, Treasure No. 209, Song Jun-gil who was a scholar in the Joseon dynasty. He named this house after his pen name. As part of the Land Development Project in Songchon-dong, a yard, a pond, and a pavilion were constructed near the place to form Dongchundang Park as a whole. Excluding the winter season (January and December), free guide service is provided by a culture guide every day.



T 042) 611-6570
A 574 Bongmyeong-dong, Yuseong-gu

Yuseong Hot Springs

The oldest among 116 spas in Korea, Yuseong Hot Springs boasts of its unparalleled richness and the largest number of visitors. Its low alkaline simple spring is silky-smooth and non-irritating to skin with a balanced amount of metal minerals such as zinc and iron and cations.



T Daejeon Arts Center 042) 270-8333 Daejeon Museum of Art 042) 270-7370
Lee Ungno Museum 042) 611-9800
A 135; 155; 157, Dunsan-daero, Seo-gu

Daejeon Culture Art Complex

A culture belt area connecting the Daejeon Arts Center, Daejeon Museum of Art and the Lee Ungno Museum. After sunset, the lights of this area make the cluster a massive piece of art. Imposing and sleek structures in golden lighting are simply fascinating.



T 042) 252-7100
A 145. Jungang-ro, Jung-gu

Euneungjeongi Culture Street

This place, once called the mecca of administration, commerce, and traditional culture from the 1960s to the 80s, now houses more than 150 flourishing businesses related to art and culture and hosts various festivals including the Daejeon 0 O'clock Festival. In addition, Sky Road, a facility with an arcade-type LED screen that opened in 2013, is a representative tourist spot in Daejeon with entertaining and public features using the main screen and media hub.

Full of things to eat,
watch, and enjoy

Festivals in Daejeon



Capturing
Daejeon



• Gyeongju Fortress

Full of things to eat, watch, and enjoy

Festivals in Daejeon

Daejeon 0 O'clock Festival

"Daejeon staying awake with endless fun"

It is a summer night festival for time travel all through the past, present, and future of Daejeon.

T 042) 120 A Jungang-ro, Jung-gu; old downtown



Daejeon Science Festival

As a representative science festival in the Republic of Korea that merges science and culture, it lets visitors encounter science and technology of the future.

T 042) 270-0321 A Expo Plaza, Daejeon Convention Center, Expo Plaza of Habit Tower



Daejeon Dong-gu Entertaining Festival

It is an urban cultural tourism festival enjoyed around the East Square and Daedongcheon Stream behind Daejeon Station, the center of transportation.

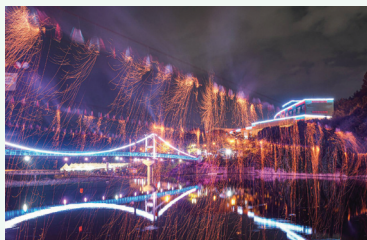
T 042) 251-6673 A Donggwangjang-ro, Soje-dong, Dong-gu; Daedongcheon Stream



Hyo Culture Ppuri Festival

This festival invites all generations to come together and experience the value and meaning of filial piety, find your roots, and appreciate family ties.

T 042) 606-6292 A 79, Ppurigongwon-ro(The Ppuri Park area), Jung-gu



Daejeon Seo-gu Art Festival

A culture and art festival reflecting the latest trends with various culture and art programs under the theme of "Arousing Imagination! Communicating with Culture!"

T 042) 288-2742 A Saemmeori and Boramae Park, Seo-gu



Yuseong Hot Springs Festival

There are many things to see and experience with Yuseong Hot Springs as seasonal-themed festivals are held.

T 042) 611-2080 A 81, Oncheon-ro, Yuseong-gu



Yuseong Chrysanthemum Festival

You can fully enjoy autumn by engaging all five senses with vibrant sculptures, fragrant flowers, and emotional performances during the peak season of chrysanthemums' graceful bloom.

T 042) 611-2678 A Yurim Park, 27, Eoeun-ro, Yuseong-gu



Daedeok Water Light Festival

It features the Water Light Night Exhibition and live performances against the beautiful landscape of Daecheongho Lake.

T 042) 608-6735 A 57-1, Miho-dong, Daedeok-gu; Daecheong Park



Capturing
Daejeon

Experience the entire
city with one ticket,

City Tour



• A view of Daejeon

Experience the entire city with one ticket

City Tour ※ The course may change; be sure to check the website.



Daejeon
City Tour

01 Theme Tour

Seonbi Daejeon Excursion

Tue



Cultural Daejeon Excursion

Wed



Forest Daejeon Excursion

Thu



Art Festival Excursion

Fri



02 Experience Tour

Let's Hyo It!

Sat



Experience Daejeon Excursion

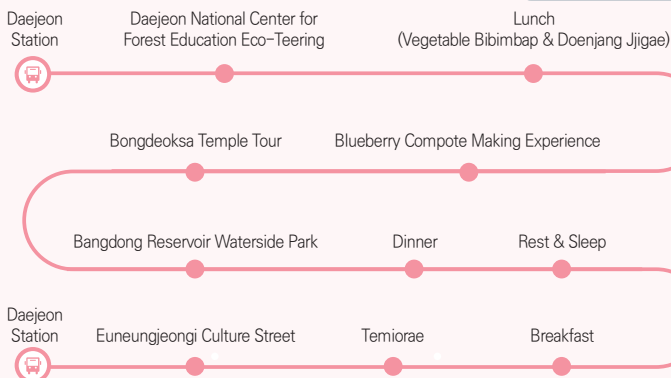
Sun



03 Daejeon Stay

Daejeon Stay

(accommodation type/limited to weekends in July and August)

Sat-Sun
accommodation

Experience the entire city with one ticket, **City Tour**

04 Challenge! Mission Tour

📍 Challenge! Mission Tour

※ Available with 15 or more people with a reservation
 ※ Reserved up to 1 week before departure date

Sat

1 section tour per week

April 10(loop trail)

May 2, 3, 4, 5(loop trail)

June 1, 2, 5, 10(loop trail)

**Sep
tember** 10(loop trail)

October 1, 2, 5, 10(loop trail)

**Novem
ber** 2, 3, 4, 5(loop trail)

※ Stop Route



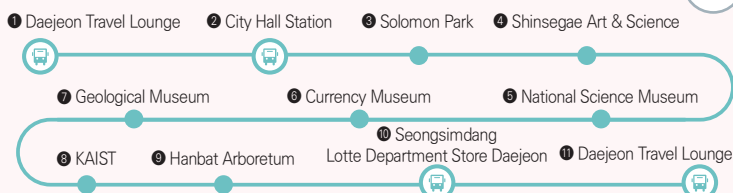
Major transit points by section

Daecheong Lake		
Section 2 (Chansaem Village Road)	Dume Villae – Daecheong Hoban-gil – Observatory – Chansaemjeong Pavilion – Jik-dong Naengcheon bus last stop	10km
Section 3 (Hoban Yeollyeo Trail)	Jik-dong last stop – Eungol-gil – Mireukwon – Naengcheon Samgeori – Witmalmoe (near Leaders)	7km
Section 4 (Hoban Nangman Trail)	Witmalmoe – Gyochon – Daecheongho Natural Ecology Hall – Lotus Village – Sinsanggyo Bridge	12.5km
Section 5 (Baekgolsanseong Fortress Nangman Trail)	Sinsanggyo Bridge – Baekgolsanseong Observatory – Konimmi Restaurant – Moraejae – Wajeong Samgeori	13km
Loop Trail		
Section 1 (Bomunsan Road)	Youth Square – Geumdong Pass	9.3km
Section 2 (Maninsan Road)	Geumdong Pass – Maninsan Service Area	13.1km
Section 5 (Gyejoksan Road)	Dongsin Science High School last but stop – Hyeonghwa Parking Lot	11km
Section 10 (Seongbuk-dong Fortress Road)	Sutonggol Valley Parking Lot – Bangdong Reservoir	7.9km

05 Circulation Tour

Science Festival

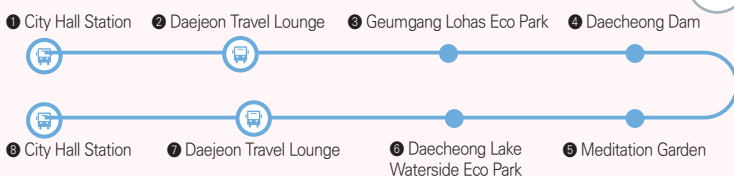
Sat



Order	1st	2nd	3rd
1 Daejeon Travel Lounge (departure)	09:40	13:00	16:00
2 City Hall Station	10:00	13:20	16:20
3 Solomon Park	10:15	13:35	16:35
4 Shinsegae Art & Science	10:25	13:45	16:45
5 National Science Museum	10:30	13:50	16:50
6 Currency Museum	10:35	13:55	16:55
7 Geological Museum	10:40	14:00	17:00
8 KAIST	10:45	14:05	17:05
9 Hanbat Arboretum	10:55	14:15	17:15
10 Seongsimjang Lotte Department Store Daejeon	11:10	14:30	17:30
11 Daejeon Travel Lounge (arrival)	11:30	14:50	17:50

Water Light Daejeon


Sun



Order	1st	2nd	3rd
1 City Hall Station (departure)	09:20	13:00	16:10
2 Daejeon Travel Lounge	09:40	13:20	—
3 Geumgang Lohas Eco Park	10:20	14:00	16:50
4 Daecheong Dam	10:35	14:15	17:05
5 Meditation Garden	11:25	14:55	17:45
6 Daecheong Lake Waterside Eco Park	11:35	15:05	17:55
7 Daejeon Travel Lounge	11:55	15:25	18:15
8 City Hall Station (arrival)	12:15	15:45	18:35

Capturing
Daejeon





From small experiences
to special trips,

Tour Programs

• Daecheong Lake

Tour Programs



Daejeon
Story Tour

Daejeon Story Tour

Daybreak Tour

Sat/Sun
05:00 ~ 08:30

5 courses
(total
20 sessions)

Hidden Treasures in Gapcheon

Yasil Village in Bonggok-dong ▶ Walking along the bank of Gapcheon Stream ▶ Jeungchon Zelkova Tree in Pyeongchon-dong ▶ Village café

Beodeunaee Daybreak Walking

Chimsan-dong, the upstream of Yudeungcheon Stream ▶ Yuhoeadang House, Musu-dong ▶ Village café

Daecheongho Exploration

Ichon Village and Gangchon Village in the Samjeong Eco Park ▶ Memorial Pavilion to Cha Yunju and Cha Yundo ▶ Guardian posts in Yongho-dong or Sintanjin Five-day Market

See the unforgettable sunrise at Daecheong Lake

Julgol Stone Guardian Post in Biryong-dong ▶ Jusan-dong Observatory or Hwangsae Rock ▶ Village café

Northern Tip Soeyeoul and Geumgang River

Soeyeoul Village ▶ Riverbank path of Geumgang River ▶ Zelkova Tree in Bongsan-dong

Night Tour

Weekdays,
Sat/Sun
18:00 ~ 21:30

3 courses
(total
10 sessions)

Daedong Sky Park near the Sky and Stars

Daedong Mural Village ▶ Daedong Sky Park ▶ Village café

Fireflies at Gapcheon Stream

Yasil Village in Bonggok-dong ▶ Habitat of fireflies along the Gapcheon Stream

Expo Night Tour

Hanbat Arboretum ▶ Expo Bridge ▶ Music fountain and media facade of Hanbit Tower

Themed Tour

Weekdays,
Sat/Sun
09:30 ~ 13:00,
13:30 ~ 17:00

3 courses
(total
30 sessions)

Village Trip

Sumitdeul Village, Jeongnim-dong

Mugunghwa Garden ▶ Origyo Bridge ▶ Zelkova Tree in Goegok-dong
▶ Gapcheon Baramgol ▶ Restaurants in Jeongnim-dong

Geomundeul Village, Heukseok-dong

Citizens' Shared Space Geomundeul in Heukseok-dong ▶ Jebi Village, Seonbi Village ▶ Heukseok-ri Station

Sumol Village, Daecheong Lake

Daecheongjeong, Miho-dong ▶ Samjeong Ecological Park ▶ Village café

Jebi Village, Shintanjin

Shintanjin Station ▶ Seokbong-dong ▶ Swallow (jebi) House (7 places)

**Themed
Tour**

Weekdays,
Sat/Sun
09:30 ~ 13:00,
13:30 ~ 17:00

3 courses
(total
30 sessions)

History Trip**Time Travel to Modern Times of Daejeon**

Former Daejeon Prison ▶ Hanbat Museum of Education ▶ Daejeon Market (spot of the March 16 protest movement) ▶ Temiorae

Meet Danjae Shin Chae-ho

Seodaejeon Citizen's Park ▶ Birthplace of Danjae Shin Chae-ho

New, Modern Architecture Tour

Historic Chungcheongnam-do Governor's Office ▶ Daejeon Government Complex ▶ Soje-dong Railroad Gwansa Village ▶ Heredium, Former Oriental Development Company ▶ KEPCO Supply Point

Customized Trip

Travel Themes and Courses Travelers can refer to the examples below to set the concrete "date and course" of their trip

Group Tour Application Available for 20~30 travelers

Inquiry 042)252-3305, 010-2405-4728

Example Themes

1. 30th anniversary of Expo '93 in Daejeon, 50th anniversary of Daedeok R&D Special District, 100th anniversary of the opening of Suwoongyo Bridge
2. Fortress trekking in Daejeon, the city of fortress (Bomunsanseong Fortress, Jilhyeonseong Fortress, Neungseong Fortress, Galhyeonseong Fortress)
3. Hoedeok, the village with merits (Dongchundang House, Ssangcheongdang House, Uam Historical Park)
4. Daejeon, the city of guardian posts (Eumnae-dong guardian posts, Beop-dong guardian posts, Yongun-dong guardian posts)
5. Celebration tour of the August 15 Independence (Eulyu Liberation Monument, Stele of Oath to be a Japanese Loyal Subject, Liberation Monument at Yuseong Elementary School)
6. Villages with old giant trees (Zelkova Tree in Goegok-dong, Walter's Dogwood)
7. Daejeon National Cemetery and Yuseong Five-day Market
8. Tour for viewing holes in the rock in Daejeon (Bihaksan Rock Hollow, Daedongyutpan Rock, Dangsan Rock)

※ Customized design of a trip is available with other preferred themes and courses.

Fee Start from KRW 5,000 per person ※ On-site cash payment (or account transfer)

※ Additional fees-for example, for a meal-may be incurred depending on the course.

No. of Participants Around 20 per course (more than 20 individuals for a group tour)

Offerings Gift bag, Daejeon Story Book, snacks, etc.

Application Daejeon Story Tour

To make a reservation, go to <https://bit.ly/대전스토리투어예약>

Naver Band of Daejeon Story Tour

Search Daejeon Story Tour on Facebook, Instagram, Blog, or YouTube to make a reservation

Inquiry 042)252-3305, 010-4553-7650



Daejeon
Travel Lounge

Daejeon Travel Lounge Program

A new hub of Daejeon travel, Travel Lounge

Tour Program

Guided Tour to Old Downtown with Culture and Tour Guide

Operation period All year round

Operation hours 10 a.m.-5 p.m. (2 regular sessions per day, minimum of 4 individuals required for a general session)

Operation course History and culture exploration course I & II, Culture and art exploration course

Fee Free

Application Online reservation on the website of the culture and tour guide or on-site reservation at Travel Lounge

Travel to Old Days in Old School Uniform and Clothes from the Time of Enlightenment

Operation period All year round

Operation hours 10 a.m.-5 p.m.

Operation course Guided Tour to Old Downtown with Culture and Tour Guide and free course

Fee KRW 7,000 for rental of school uniform / KRW 1,000 for rental of bag or hat

City Tour Guided by Culture and Tour Guide

Operation period All year round

Operation hours 09:35 a.m.-5:30 p.m.(morning course, afternoon course)

※ Details on the Daejeon City Tour website

Operation course Theme Tour(Tuesday-Sunday)

Fee Different by course

Application www.daejeoncitytour.co.kr, 042-254-4555



Experience
program

Make your own T-shirt

Operation hours 9 a.m.–8:30 p.m.

Content Direct drawing, photo printing

Fee KRW 10,000 per person

Make your own mug

Operation hours Office hours

Content Choose a cup → Choose a design → Coloring → Baking

Fee Regular KRW 7,000, With photos KRW 8,000

Color a postcard of a tourist spot in Daejeon

Operation hours Office hours

Fee Free

Various games and board games

Operation hours 9 a.m.–9 p.m.

Content Game, board game

Fee Free

Take a selfie at a photo zone and have it printed

Operation hours 9 a.m.–9 p.m.

Content Take a cool selfie at the photo zone and have it printed

Fee Free (1 photo per person)

Culture concert and lecture of Daejeon Travel Lounge

Operation hours Every last Friday of the month, 7 p.m.–8:30 p.m.

Content Travel, art, foreign culture, Christmas, sound concert, etc.

Fee Free

- The experience venue is the second floor of Daejeon Travel Lounge, the experience zone.
- Experience programs are open to those who made a reservation or those who make an on-site application on a first-come-first-served basis.
- The tour programs are subject to change depending on the circumstances.
- Application is available on Instagram by searching "Daejeon Travel Lounge" or on the site.
- All programs closed on Seollal and Chuseok





Capturing
Daejeon

Representing the present and
future of scientific technology,

Science Tour

• Expo Bridge

Science Tour



Daejeon
Science Tour

National Science Museum www.science.go.kr



National Science Museum is the place to provide people with education with various science and technology exhibits. It comprises the Permanent Exhibition Hall, Special Exhibition Hall, Outdoor Exhibits, Planetarium, Science Hall, seminar rooms, nature-learning center, amateur radio station, and Biosphere. The museum serves as a regional center of science and technology, and is dedicated to promoting interest in science and creativity.

T 042) 601-7894, 7979

A 481. Daedeok-daero, Yuseong-gu

B Get off the bus 104, 121, 604, town shuttle bus 5, local bus 1 at National Science Museum. Walk 5 min toward the ticket box / Get off the bus 301, 318, 606, 918, 1001 town shuttle bus 5 at the entrance of National Science Museum. Walk 5 min toward the ticket box / Get off the bus 705, 707, 911, express bus 3 at Shinsegye Department Store. Walk 10 min. toward the ticket box

Expo Science Park djto.kr/kor/board.do?menuidx=710



The Daejeon Expo Science Park is a theme park to commemorate the successful holding of the Daejeon International Exposition in the city in 1993. It consists of the Daejeon Expo Commemorative Center, World Expo Souvenirs Museum, and Advanced Science Museum and holds a variety of events all year round. Hanbit Tower, its symbolic tower, is where you can see the major areas of Daejeon from up high.

T 042) 250-1111

A 480. Daedeok-daero, Yuseong-gu

B Get off the bus 121, 705, 707, 911, local bus 1 Get off at Hanbit Tower
Get off the bus 618, express bus 3 at DCC Terminal

Daejeon Observatory <https://djstar.kr>



As the one and only observatory that is open to the general public in Korea, it makes it possible for visitors to observe celestial bodies, including the sun during the day, and planets, the moon, nebula, and galaxy during the night.

T 042) 863-8763

A 213-48, Gwahak-ro, Yuseong-gu

B Get off the bus 604, local bus 1 at Daejeon Observatory. walk 11 min
Get off the bus 121, 606, 704, 912 at Hanwha Chemical Research and Development Center.
Walk 15 min

Creative Invention Experience Center

(International Intellectual Property Training Institute) iipti.kipo.go.kr



The Invention Education Center is an educational institution that offers fun activities for visitors to find the link between their own experiences and the invention process and to incorporate them into their daily lives, going further from enjoying the exhibition.

T 042) 601-4396

A 82, Gwahak-ro, Yuseong-gu

B Get off the bus 604, local bus 1 at Nuclear Safety Technology Institute, walk 9 min.

Geological Museum kigam.re.kr/museum



As the only geology museum in Korea, it exhibits samples of minerals, rocks and fossils, screens educational films, holds lectures, and provides hands-on learning programs, thereby promoting public awareness of geology as an important field of science.

T 042) 868-3797~8

A 124, Gwahak-ro, Yuseong-gu

B Get off the bus 604, local bus 1 at Korea Institute of Geoscience and Mineral Resources

Daejeon Regional Meteorological Administration daejeon.kma.go.kr



Founded in 1968, it provides timely and accurate weather forecasts and other weather-related services, based on data generated by a supercomputer.

T 042) 363-3599

A 383, Daehak-ro, Yuseong-gu

B Get off the bus 104, 121, 604, shuttle bus 5, local bus 1 at Daejeon Regional Meteorological Administration

Korea Advanced Institute of Science & Technology (KAIST)

www.kaist.ac.kr



It is dedicated to research in the field of science and engineering, constantly strives to fulfill its founding philosophy of developing high-quality human resources in science and technology, conducting mid- and long-term national R&D projects, and advancing Korea's science and technology. The university has established a wide network including other research institutes, universities, and related organizations.

T 042) 350-2114

A 291, Daehak-ro, Yuseong-gu

B Get off the bus 104, 121, shuttle bus 5 at KAIST

Get off the bus 604 at Daejeon Regional Meteorological Administration. Walk 7 min.

Korea Institute of Machinery & Materials (KIMM) www.kimm.re.kr



It is a research institute founded in 1976 to perform surveys on the latest technology of machinery and materials, conduct R&D, perform tests and evaluations, and support technology transfer and other related activities.

T 042) 868-7114

A 156, Gajeongbuk-ro, Yuseong-gu

B Get off the bus 604, 704, 912, shuttle bus 1 at Korea Institute of Machinery & Materials

Korea Institute of Oriental Medicine (KIOM) www.kiom.re.kr



It was founded in 1994 to conduct in-depth and systematic R&D for the theories and technologies in the sphere of oriental medicine, and to establish better medical practices and procedures, with the ultimate goal of improving public health.

T 042) 861-1994

A 1672, Yuseong-daero, Yuseong-gu

B Get off the bus 121, 918, Shuttle bus1 at Seonbimaekul

Korea Institute of Geoscience and Mineral Resources (KIGAM)

www.kigam.re.kr



KIGAM is a government-funded research institute responsible for maintaining the land, developing the national industry by securing the mineral resources, maintaining the geological features and the environment, and inventing the scientific technique based on the new ideas and knowledge.

T 042) 868-3114

A 124, Gwahak-ro, Yuseong-gu

B Get off the bus 604, local bus 1 at Korea Institute of Geoscience and Mineral Resources

Korea Research Institute of Bioscience & Biotechnology (KRIBB)

www.kribb.re.kr



It is the only biotechnology research institute in Korea dedicated to basic research aimed at enhancing human understanding of the fundamental mechanisms of life. It conducts studies on increasing food production, as well as developing advanced bio materials, clean environment technologies, and new energy sources.

T 042) 860-4114

A 125, Gwahak-ro, Yuseong-gu

B Get off the bus 604 at Korea Research Institute of Bioscience and Biotechnology
Get off the local bus 1 at Korea Institute of Geoscience and Mineral Resources

Korea Institute of Energy Research (KIER) www.kier.re.kr



Since its foundation in 1977, it has been playing a leading role in designing national energy technology policies, and it has been committed to developing efficient, clean energies and new energy sources for over four decades now.

T 042) 860-3114

A 152, Gajeong-ro, Yuseong-gu

B Get off the bus 121, 604, 606, 704, 912, local bus 1 at Korea Institute of Energy Research

Korea Atomic Energy Research Institute (KAERI) www.kaeri.re.kr



It is an integrated nuclear power research institute founded in 1959, performs R&D in the field of nuclear power and develops basic and generic technologies including nuclear fusion, advanced materials, and robotics. In addition, it devises technology policies and is involved in developing human resources in related fields.

T 042) 868-2000

A 111 Daedeok-daero 989beon-gil, Yuseong-gu

B Get off the bus 301, 704, 918, shuttle bus 5 at The Bukdaejeon IC intersection. Walk 15 min

Electronics & Telecommunications Research Institute (ETRI) www.etri.re.kr



Founded in 1976, it is the largest state-run IT & communications research institute in Korea. It has established itself at the center of Korea's IT and communications history, and is committed to keeping up to date with the latest technology trends and developing new technologies in IT & communications, as well as training IT & communications specialists.

T Main Number 1466-38, Inquiry about Exhibition 042) 860-6204, 3913

A 218, Gajeong-ro, Yuseong-gu

B Get off the bus 318, 606, shuttle bus 1 at Electronics and Telecommunications Research Institute

Korea Astronomy & Space Science Institute (KASI) www.kasi.re.kr



KASI has been playing a pivotal role in the field of astronomy and space science in Korea since its establishment in 1974. It conducts theoretical research and observation of celestial bodies to investigate the origin and evolution of the universe. It is now expanding its research scope and observation areas with the construction of large-scale observation facilities on the ground and the development of next generation space payloads.

T 042) 865-3332

A 776. Daedeok-daero, Yuseong-gu

B Get off the bus 301, shuttle bus 5 at Korea Astronomy and Space Science Institute

Korea Research Institute of Standards & Science (KRISS)

www.kriss.re.kr



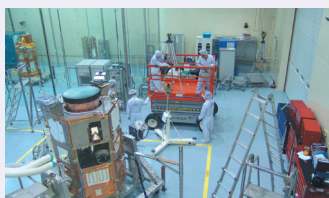
Since its establishment in 1975, it has been playing a significant role in developing the national economy and advancing science and technology in Korea by developing measurement standards that form the foundation of science and technology and of industrial activities, as well as sharing its R&D outcomes

T 042) 868-5114

A 267, Gajeong-ro, Yuseong-gu

B Get off the bus 318, 606, shuttle bus 1 at Korea Research Institute of Standards and Science

Korea Aerospace Research Institute (KARI) www.kari.re.kr



It was established in 1989 as a research institute specializing in the development of mid- and small-sized aircraft, satellites for earth observation, communications, and broadcasting, scientific rockets, and space launch vehicles. It also plays a pivotal role in developing and promoting applied aerospace technologies.

T 042) 860-2114

A 169-84, Gwahak-ro, Yuseong-gu

B Get off the bus 604 at Korea Aerospace Research Institute

Korea Institute of Fusion Energy (KFE) www.kfe.re.kr



It is a global leading research institute in the development of national fusion energy, constructing the Korean-style nuclear fusion reactor and developing fusion energy commercialization technology, cultivating excellent human resources in the field of fusion energy.

T 042) 879-6000

A 169-148, Gwahak-ro, Yuseong-gu

B Get off the bus 48, 105, 108, 115, 117, 911, 912, 1002, shuttle bus 1 at Chungnam National University College of Agriculture. Walk 20 min / Get off the bus 604 at Korea Aerospace Research Institute. Walk 14 min Get off the local bus 1 bus at KAIST. Walk 10 min.

Korea Research Institute of Chemical Technology (KRICT)

www.kRICT.re.kr



Founded in 1976, it has been the leading Korea's chemical industry conducting R&D in chemistry and technology convergence, facilitating chemical technology transfer to industry, training chemistry specialists, and supporting the development of Korea's chemical industry infrastructure.

T 042) 860-7114

A 141, Gajeong-ro, Yuseong-gu

B Get off the bus 121, 604, 606, 704, 912 at Korea Research Institute of Chemical Technology

Korea Basic Science Institute (KBSI) www.kbsi.re.kr



It is equipped with world-class research facilities and equipment, and is actively engaged in joint research activities. By developing creative and innovative analysis techniques and equipment, it has emerged as a leading research and analysis institute that contributes to the development of Korea's basic science.

T 042) 865-3500

A 169-148, Gwahak-ro, Yuseong-gu

B Get off 48,105,108,115,117, 911, 912, shuttle bus 1, 1002 at Chungnam National University College of Agriculture. Walk 20 min.

Get off the bus 604 at Korea Aerospace Research Institute. Walk 14 min.

Get off the local bus 1 bus at KAIST. Walk 10 min.

Capturing
Daejeon

Harmonizing with the tradition
and modern era,

Culture Tour



• Sikjongsan Mountain

Culture Tour

Uam Historical Park



Uam Historical Park is located at the foot of Gyejoksan Mountain in Gayang-dong. The location is known as the residence where Uam Song Si-yeol (1607–1689), a leading Confucian scholar of the Joseon Dynasty, dedicated himself to Confucian studies. The park houses such important cultural properties as Namganjeongsa House, Gijukjeong Pavilion, and the woodblock printing type of Songja daejeon, a collection of Song's books, poems and other writings.

T 042) 673-9286

A 53, Chungjeong-ro, Dong-gu

B Get off the bus 311 at Uam Historical Park

Songaedang House



Songaedang House is a separate house that was built by Kim Gyeong-yeo (1597–1653) during the Joseon Dynasty. The house, measuring 3 kan by 2 kan* (a unit of measurement referring to the distance between two columns), has been designated as Daejeon Tangible Cultural Heritage.

T 042) 608-6574

A 60, Gyejoksan-ro 17beon-gil, Daedeok-gu

B Get off the express bus 2, bus 615, 706, 701 at Jungni-dong. Walk 5 min
Get off the bus 620 at Youth Training Center of Daedeok district. Walk 3 min.
Get off the bus 314 at Water Supply Management Office. Walk 5 min.

Dongchundang House



Dongchundang House, Treasure No. 209, was built in 1643 by Song Jun-gil (1606–1672) who served as the Minister of the Military and Defense during the reign of King Hyojong of the Joseon Dynasty. The lecture hall served as a venue where scholars and writers exchanged their ideas and shared their academic interests.

T 042) 608-6574

A 80, Dongchundang-ro, Daedeok-gu

B Get off the bus 103, 311, 314, 617 at Dongchundang House

Historic House of Sodaecheon·Hoyeonjae, Daejeon



This house has been inhabited by eleven generations of the Song family ever since Song Byeong-ha, a grandson of Song Jun-gil, first moved here.

T 042) 608-6574

A 70, Dongchundang-ro, Daedeok-gu

B Get off the bus 103, 311, 314, 617 at Dongchundang House

Ssangcheongdang House



It is a detached house built by Song Yu (pen-name: Ssangcheongdang, 1389–1446), a scholar of the early period of the Joseon Dynasty. It showcases the architectural style of the period, and is decorated with dancheong, a traditional style of multicolored paintwork, on the roof.

T 042) 608-6574

A 17, Ssangcheongdang-ro, Daedeok-gu

B Get off the bus 314 at Water Supply Management Office. Walk 4 min.

Get off the bus 620 at Youth Training Center of Daedeok district. Walk 2 min.

Yuhoedang House



It was built by Gwon I-jin (pen-name: Yuhoedang, 1668–1734) in the later period of the Joseon dynasty as a personal residence. He read books and taught others here, and held memorial services for his parents, who were buried on the mountain behind the building.

T 042) 606-6286

A 32-20, Unnam-ro 85beon-gil, Jung-gu

B Get off the bus 33-1, 33-2 at Musu-dong. Walk 4 min to Yuhoedang

Daeungjeon Hall of Gosansa Temple



Gosansa Temple was built by Great Monk Doseonggooksa in 886, the first year of King Jeonggang's reign of Shilla dynasty, and was remodeled by Great Monk Sudenggooksa in 1636, the 14th year of King Injo's reign of Joseon dynasty. Yangsunggak and Geungnakbojeon Hall are located inside the temple, and two stupas are seated in left front of Daeungjeon Hall.

T 042) 282-2263

A 205, Daejeon-ro 316beon-gil, Dong-gu

B Get off the bus 108, 501, 513, 620, express bus 4 at Daeseong Samgeori. Walk 18 min.
Get off the bus 31, 52, 511, 512, 514 at the entrance of Gosansa Temple. Walk 17 min.

Dosanseowon Confucian Academy



It is a Confucian academy built in 1693 in memory of Gwon Deuk-gi (pen-name: Manhoe) and his son Gwon Si (pen-name: Tanong). The king granted a plaque for the memorial hall, as a token of honor and recognition, in 1711. It was restored by the Andong Gwon family twice, in 1968 and 1973, after it was torn down following the Daewongun's decree ordering the abolition of all Confucian academies (1868).

T 042) 486-7771

A 8, Namseon-ro, Seo-gu

B Get off the bus 602, 916 at Dosanseowon Confucian Academy

Birth Home of Danjae Shin Chae-ho



It is Daejeon Monument No. 26, and is the residence where Sin Chae-ho (pen-name: Danjae), a notable independence activist and historian, was born and lived until the age of eight.

T 042) 606-6286

A 47, Danjae-ro 229beon-gil, Jung-gu

B Get off the bus 32 at Dorimoe. Walk 5 min.

Munchungsa Shrine



This shrine was built to enshrine the mortuary tablets and portraits of the Confucian scholars Song Byeong-sun (1836–1905) and Song Byeong-soon (1839–1912), who resisted the Japanese occupation of Korea and were patriotic martyrs. Originally, it was set up in Yeongdong, Chungcheongbuk-do in 1908, but later it was relocated in 1966 to its present place, where they were born and martyred, as part of a project for commemorating the 60th anniversary of their martyrdom.

T 042) 251-4204

A 44, Dongbu-ro 73beon-gil, Dong-gu

B Get off the bus 603, 611, 619 at Yongun Library. Walk 5 min.

Bongsoru Pavilion



It is a lecture hall where Nam Bun-bung (1607–1674) taught his students. Nam served as a judge of the Jangyewon (a court of law that ruled on cases involving publicly and privately owned servants). Nam followed the teachings of Jo Gwang-jo. The building was originally named Bongsojae, meaning "a nest for birds," as it was intended to serve as an educational institute for young scholars.

T 042) 606-6285

A 29, Bongsoru-ro, Jung-gu

B Get off the express bus 4, bus 52, 108, 501, 513, 620 at Seokgyu-dong Community Service Center. Walk 2 min.

Suwoongyo Dosolcheon Cheondan



Built in 1929, It is a symbolic wooden building of Suwoongyo, which is a religion that worships god after its founder, Choi Je-woo (pen name: Suun), who initiated Donghak academic movement.

T 042) 861-1771

A 80, Jaun-ro 245beon-gil, Yuseong-gu, Daejeon

B Get off the shuttle bus 3 at Military Apartment. Walk 10 min.

Get off the bus 912 at the entrance of Suwoongyo. Walk 17 min.

Sunghyeonseowon Confucian Academy



Sunghyeonseowon Confucian Academy was built to commemorate the life and academic achievements of Jeong Gwang-pil, Kim Jeong, and Song In-su, high-ranking government officials of the Joseon Dynasty. The academy houses the ancestral tablets of these individuals, and was granted a plaque by the king.

T 042) 226-8413

A 36, Expo-ro 251beon-gil, Yuseong-gu

B Get off the bus 705, 802, 121 at Wonchon Intersection. Walk 7 min.

Changgyesungjeolsa Shrine



Sungjeolsa Shrine was built in 1923 in memory of Bak Paeng-nyeon (1417–1456) and Bak Sim-mun (1408–1456). The name Sungjeolsa means “a shrine overlooking clear waters (i.e. Yudeungcheon Stream).”

T 042) 606-6285

A 67, Daedunsan-ro 137 beon-gil, Jung-gu

B Get off the bus 34, 81, 316, 513 at Hanbitt High School. Walk 6 min.

Daeseongjeon Shrine of Jinjamhyanggyo Local Confucian School



This building was founded in 1405 and dedicated to serving ancestral rituals for Confucius and other great Confucian scholars with their memorial tablets. The Myeongnyundang Lecture Hall was used for education.

T 042) 543-1811

A 67, Gyochon-ro, Yuseong-gu

B Get off the bus 211, 212, 704, shuttle bus 3 at Jinjamhyanggyo. Walk 2 min.

Daeseongjeon Shrine of Hoedeokhyanggyo Local Confucian School



This building was an educational institute in the Hoedeok area during the early Joseon dynasty. Daeseongjeon is a shrine that was dedicated to the memorial tablets of Confucius and other great Confucian scholars. The Myeongnyundang Lecture Hall was used for education.

T 042) 625-5565

A 126, Daejeon-ro 1397 beonan-gil, Daedeok-gu

B Get off the bus 74, 213, 316, 512, 616 at Korea Express. Walk 13 min.

Korea Genealogy Museum dijunggu.go.kr/hyo/sub04_01_01.do



Korea Genealogy Museum is permanently exhibiting system and history of pedigrees, royal family tree, special pedigrees, etc. with focus on pedigrees in the Joseon dynasty. Special exhibitions related to pedigree such as Sando, segment map, etc. containing pedigrees, are being held every year, with execution of pedigree-related education such as children's museum school, pedigree college, etc.

T 042) 288-8312

A 79, Ppurigongwon-ro, Jung-gu

B Get off the bus 312, 313 at the last stop

Get off the bus 34, 316, 513 at Agricultural Product Distribution Center. Walk 13 min.

Daejeon Hyo Culture Promotion Institute www.k-hyo.kr



It is the country's only one educational, research institution for exhibition and experience of Hyo culture based on Laws for Exhortation of Filial Piety. To establish new values of Hyo that has been somewhat withdrawn entering the contemporary society, it is carrying out promotional activities for Hyo culture in behalf of people such as students.

T 042) 580-9000

A 45, Ppurigongwon-ro, Jung-gu

B Get off the bus 312, 313 at the last stop

Get off the bus 34, 81, 316, 513 at Agricultural Product Distribution Center. Walk 13 min.

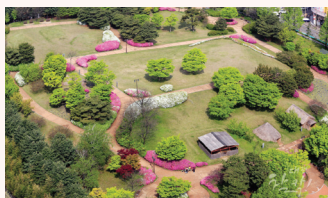
Daejeon Prehistoric Museum daejeon.go.kr/pre/index.do



The Daejeon Prehistoric Museum, located at the Noeundong Historical Site (Monument No. 38), is the first municipal museum of Daejeon Metropolitan City. The museum consists of an outdoor experience center, an indoor experience center, and an information center.

- T** 042) 270-8640
- A** 126, Noeundong-ro, Yuseong-gu
- B** Get off the bus 101, 114, 116, 655, 1002 at Noeun Wholesale Market. Walk approximately 11 min
Get off the bus 117, 121 at Noeun Station. Walk 12 min
- S** Get off subway at Noeun Station. Walk 12 min

Dunsan Prehistoric Site



The Dunsan Prehistoric Site was the first site at which relics from the Paleolithic, Neolithic and Bronze Ages were simultaneously discovered in Korea.

- T** 042) 270-2418
- A** 9, Daedeok-daero 317beon-gil, Seo-gu
- B** Get off the bus 108, 116, 301, 315, 318, 604, 618, 705, 706, 707 at Prehistoric Site. Walk 3 min

Daejeon Traffic Culture Institute www.dtcc.or.kr



It is an educational institution dedicated to creating a happy, accident-free living environment for the public by offering comprehensive educational programs and hands-on experience activities designed to raise public awareness of the importance of transportation safety.

- T** 042) 865-1161
- A** 480, Daedeok-daero, Yuseong-gu
- B** Get off the bus 121, 705, 707, 911, local bus 1 Get off at Hanbit Tower.
Get off the bus 618, express bus 3 at DCC Terminal.

Natural Heritage Center nrch.go.kr/nhc



The Natural Heritage Center is a museum that exhibits taxidermied animals, as well as films, photos, and pictures. The exhibits are accompanied by interesting descriptions.

T 042) 610-7610

A 927, Yudeung-ro, Seo-gu, Daejeon

B Get off the bus 618 at National Heritage Center. Walk 4 min

Get off the bus 606, 618, 911 at Hanbat Arboretum or Daejeon Arts Center. Walk 15 min

Hanbat Museum of Education www.hbem.or.kr



Hanbat Museum of Education is located in Samseong-dong, Dong-gu. At this place, you can browse the history of education with more than 6,000 items related to education on display.

T 042) 670-2200, 2212

A 96, Uam-ro, Dong-gu

B Get off the bus 60, 63, 101, 201, 202, 314, 501, 512, 606, 607, 611, 613, 614, 616, 622, 707, 711, 802, 2002 at Samseong Elementary School/Seongnam Junction. Walk 3min

Historic Chungcheongnam-do Office Building (Daejeon Modern History Exhibition Hall)



As Registered Cultural Property No. 18, the old Chungcheongnam-do Provincial Office had been used as provincial office for 80 years since the Japanese colonial period before it was transformed into a special exhibition hall where modern and contemporary history exhibitions and special exhibitions are held.

T 042) 270-4535~8

A 101, Jungang-ro, Jung-gu

B Get off the express bus 1, 20, 101, 103, 201, 202, 314, 608, 613, 614, 622, 2002 at Jung-gu Office. Walk 5min

Get off the bus 108, 511, 603 at Daejeon Law-abiding Support Center. Walk 5 min

S Get off the subway at Jung-gu Office Station, Exit 4. walk 5 min

Daejeon Arts Center www.daejeon.go.kr/djac



Daejeon Arts Center is both an important cultural facility of the city and an architectural masterpiece. The center's Art Hall is capable of accommodating 1,546 people, and boasts state-of-the-art performance facilities and equipment.

T 042) 270-8333

A 135, Dunsan-daero, Seo-gu

B Get off the bus 606, 618, 911 at Daejeon Arts Center. Walk 6 min

Get off the bus 104, 301, 318, 604, 606, 705, 707, 911, 918 at Seo-gu Daejeon Health Center. Walk 10 min

Daejeon Art Center daejeon.go.kr/dma/dmaContentsHtmlView.do?menuSeq=6077



As a new cultural space opened in September 2008, the Daejeon Art Center is Korea's first case of remodeling modern architecture. Along with other private galleries, the center has turned the neighborhood of the culture art street in Daeheung-dong into a gallery street.

T 042) 270-7390

A 470, Daejong-ro, Jung-gu

B Get off the bus 604, 612, 701, 711, 802 at Daeheung-dong Catholic Church. Walk 1 min

S Get off at Jungangno Station, Exit 2. Walk 4 min

Daejeon Museum of Art daejeon.go.kr/dma/index.do



Opened in 1998, the Daejeon Museum of Art is a complex cultural facility comprising an exhibition hall, an information center, seminar rooms, a water fountain park, and a lawn park.

T 042) 120, 270-7378

A 155, Dunsan-daero, Seo-gu

B Get off the bus 606, 618, 911 at Daejeon Arts Center. Walk 8 min

Get off the bus 104, 301, 318, 604, 606, 705, 707, 911, 918 at Seo-gu Daejeon Health Center. Walk 12 min

Lee Ungno Museum www.leeungnomuseum.or.kr



The Lee Ungno Museum of Art is an architectural gem that incorporates elements of East and West. The museum's collection includes 1,204 works of art by Goam (pen-name of Lee Ungno).

T 042) 611-9800

A 157, Dunsan-daero, Seo-gu

B Get off the bus 606, 618, 911 at Daejeon Arts Center. Walk 6 min

Get off the bus 104, 301, 318, 604, 606, 705, 707, 911, 918 at Seo-gu Daejeon Health Center. Walk 14 min

Sky Road



It is a huge arcade-type LED screen measuring 214 meters in length, 13.3 meters in width, and 20 meters in height installed in Euneungjeongi Street. The main screen and accompanying media hub are used to present diverse and entertaining contents of public interest.

T 042) 252-7100

A Euneungjeongi Culture Street, Eunhaeng-dong, Jung-gu

B Get off the express bus 2, 4 or the bus 201, 314, 317, 511, 514, 603, 608, 614, 622, 701, 711, 802 at Euneungjeongi Culture Street.

Get off the bus 103, 107, 311, 313, 612, 615, 2002 at Jungangno Station Exit 1. Walk 2 min

S Get off at Jungangno Station, Exit 1. Walk 2 min

Daejeon Artist Residency TEMI www.temi.or.kr



Temi Library was remodeled into the special space where Korean and foreign artists are granted residencies to create artworks and communicate and exchange their ideas. It consists of individual studios, group studios, media rooms, seminar rooms, and exhibition halls, all of which are designed to support the creative activities of the resident artists.

T 042) 480-1033

A 525, DaeJong-ro, Jung-gu

B Get off the bus 107, 514, 604, 620 at Jungangno Station, Exit 7

NARAE Daejeon Traditional Exhibition Hall

dcaf.or.kr/web/page.do?menuIdx=422



The Narae Daejeon Traditional Exhibition Hall was opened in 2014 to exhibit the works of certified traditional artisans and to provide training for future artisans. The hall exhibits intangible cultural assets all year round (free admission), and also holds special exhibitions and exchange exhibitions to provide museum visitors with opportunities to enjoy the region's traditional culture.

T 042) 636-8008

A 2, Cheolgap 2-gil, Dong-gu

B Get off the bus 30, 102, 317, 616, 707, 711, express bus 2, B1 at Daejeon Station East Square.

Get off the bus 202, 60, 63, 605, 615, 701, Jungang-dong Community Center. Walk 2 min

S Get off the subway at Daejeon Station, Exit 1. Walk 10 min

Currency Museum museum.komsco.com



At this museum, visitors can see the history of currency all in one view, spanning from the Stone Age to modern times. The currency and stamps of Korea, as well as other countries, are also on display at the museum. Visitors can learn about history and the economy through the exhibition of different currencies.

T 042) 870-1200

A 80-67, Gwahak-ro, Yuseong-gu

B Get off the bus 301, 318, 606, 918, 1001, shuttle bus 5 at National Science Museum entrance.

Walk 15 min

Get off the bus 604, local bus 1 at Korea Institute of Nuclear Safety. Walk 15 min

Hyecheon Tower (Carillon) www.dst.ac.kr



Daejeon Institute of Science and Technology's Carillon, which consists of 78 bells, is listed in the Guinness Book of Records as the world's largest carillon. As it is located atop the 78-meter-high Hyecheon Tower, the sound of the carillon resonates up to a radius of 3km.

T 042) 580-6114

A 100, Hyecheon-ro, Seo-gu

B Get off the bus 301 at Daejeon Institute of Science And Technology. Walk 6 min

Get off the bus 216, 916 at Gyeryong Apartment. Walk 8 min

Get off the bus 312, 314, 316 at Singye Elementary School. Walk 11 min

Daejeon Yeonjeong Korean Traditional Music Center

daejeon.go.kr/kmusic/



The Daejeon Yeonjeong Korean Traditional Music Center was moved to a newly constructed building and reopened in 2015 as Korea's first performing arts center dedicated to traditional Korean music. The center stages more than 100 concerts each year, while its resources center holds a collection of over 12,000 books and about 3,000 albums that is open to the public all year round.

T 042) 270-8500

A 181, Dunsan-daero, Seo-gu

B Get off the bus 606, 618, 911 at Hanbat Arboretum

Get off the bus 104, 301, 318, 604, 606, 705, 707, 911, 918 at Seo-gu Daejeon Health Center.

Walk 19 min

Daejeon Artist House



Daejeon Artist House was opened in March 2015 as a venue for local artists working in diverse fields and members of the public to gather and communicate. It has a range of facilities including a multi-purpose stage and an exhibition hall. Nuri Hall, with a capacity of 300 people, has a circular stage and automatically opening and folding sliding seats.

T 042) 480-1081~8

A 32, Jungang-ro, Jung-gu

B Get off the bus 20, 30, 33-1, 33-2, 101, 103, 201, 202, 311, 314, 513, 608, 612, 613, 614, 622, 2002 at Daejeon Chungnam Regional Military Manpower Administration. Walk 2 min

S Get off subway at Seodaejeon Negeori Station, Exit 8. Walk 5 min / Get off the subway at Jung-gu Office Station, Exit 2. Walk 6 min

Memorial Sculpture of the Pope's Visit



A memorial sculpture was erected at the entrance of West Gate of Daejeon World Cup Stadium to commemorate the visit of Pope Francis, who celebrated a commemorative mass on Assumption Day at the stadium, in August 2014.

A 32, World Cup-daero, Yuseong-gu

B Get off the bus 101, 114, 116, 655, 1002 at Noeun Agriculture and Marine Products Market. Walk 6 min

S Get off the subway at World Cup Stadium Station, Exit 7. Walk 10 min

T-NOLZA Animal Park blog.naver.com/tanimal0055



Visitors can see the various species including the rare animals and familiar animals in one place. There is a baby animal experience center where visitors can feel the animals. Also, there is a place for people to interact with baby animals as well as a vast garden for a lovely stroll.

T 042) 863-0055

A 9-51, Daedeok-daero 989beon-gil, Yuseong-gu

B Get off the bus 301, 704, 918 shuttle bus 5 at North Daejeon IC Intersection Stop. Walk 5 min

Daejeon Munciple Museum daejeon.go.kr/his



In Daejeon Municipal Museum, history and culture of Daejeon can be examined at a glance, and diversified history of Daejeon from prehistoric era to Chosun era is being disclosed for easy understanding.

T 042) 270-8600

A 398, Doan-daero, Yuseong-gu

B Get off the bus 213, 601, 706 at I-Park City. Walk 2 min

Get off the bus 106, 115, 312, shuttle bus 11 at Sangdae Intersection. Walk 6 min

Golfzon Zoimaru www.golfzonzoimaru.co.kr



Golfzon Zoimaru is the nation's first golf theme park where you can enjoy golf, culture, gourmet, and shopping. The golf zone enhances your golf ability with cutting-edge IT technology. Various cultural and amusement facilities will satisfy the whole family. It is a truly "unprecedented theme park."

T 1544-1455

A 40, Expo-ro 97beon-gil, Yuseong-gu

B Get off the bus 618, 707, 911, express bus 3, local bus 1 at DCC Terminal, Walk 2 min

Daejeon Solomon Law Park lawnorder.go.kr/solomondj



It is the nation's first law-themed park operated by the Ministry of Justice. Here, not only children and adolescents but also ordinary citizens can have fun and enjoy learning and experiencing law. The park consists of law experience and training facilities as well as outdoor playground and experience site.

T 042) 323-8800

A 219-39 Expo-ro, Yuseong-gu

B Get off the bus 705, 121 at Solomon Park, Wonchon-dong.

Daejeon Children Center www.djkids.or.kr



It is a cultural complex facility where children below 13 years can play freely. It consists of experience facilities, musical hall, and atelier and offers children's programs and counseling for children. Experience Forest and Four Seasons Imagination Playground are spots for children's exciting play.

T 042) 824-5500

A 1st FL, East Building, 32, World cup-daero, Yuseong-gu

B Get off the bus 101, 114, 116, 655, 1002 at Noeun-dong Fish Market. Walk 13 min / Get off the bus 119, 302 at Jukdong Intersection. Walk 11 min

S Get off the subway at World Cup Stadium Station, Exit 7. Walk 18 min

Heredium (Daejeon Office of Former Oriental Development Company) www.heredium.art



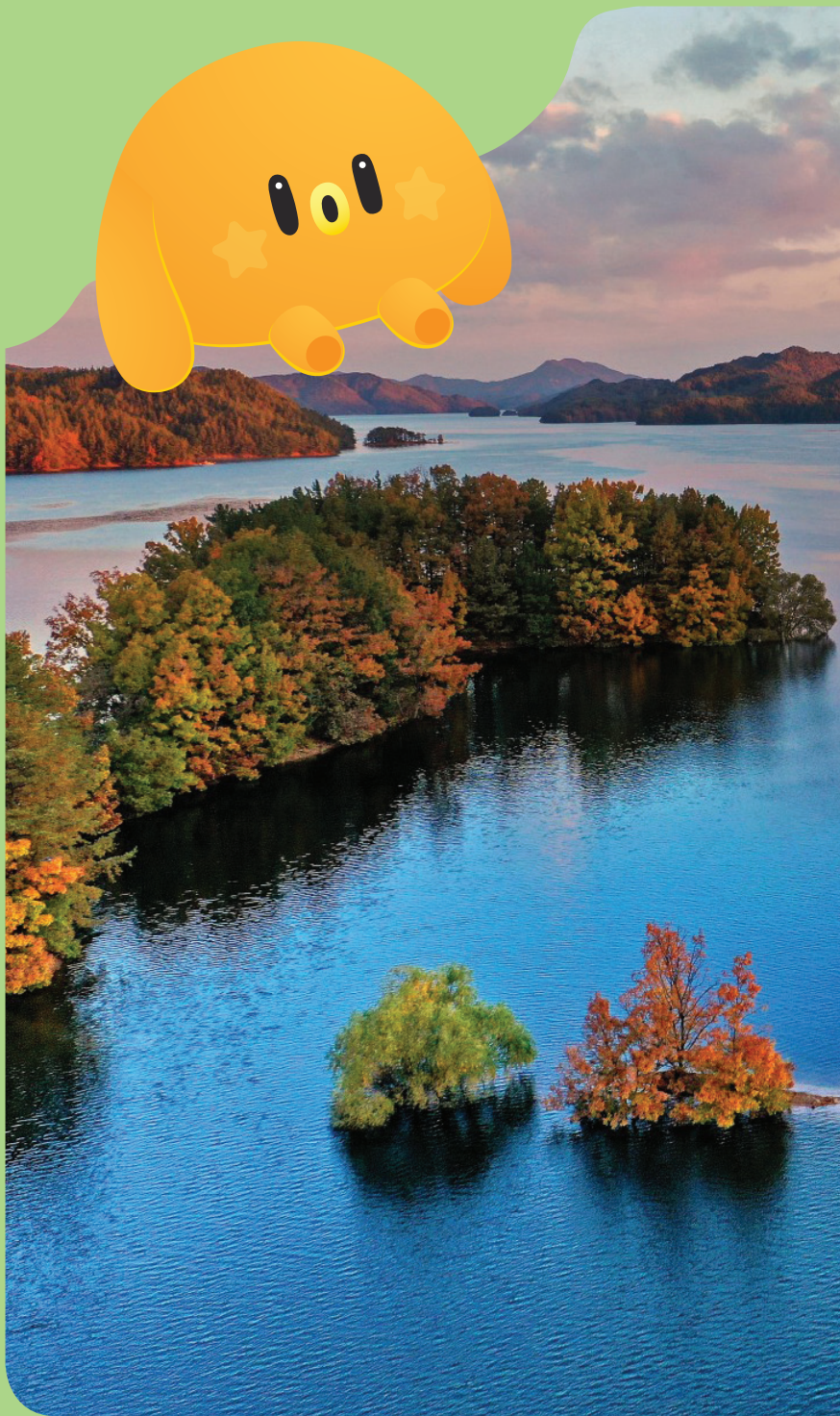
It is an art and culture complex created by restoring the Daejeon Office of Former Oriental Development Company. Heredium in Latin means "inherited land," preserving 100 years' history of pain from the period of Japanese colonization.

T 070-8803-1922

A 735, Daejeon-ro, Dong-gu

B Get off the bus 313, 501, 511, 514, 606, 612, 802, 31, 60, 62, 63, 607 at Wondongnegeori

S Get off the subway at Daejeon Station. Walk 12 min. / Get off the subway at Daedong Station. Walk 14 min / Get off the subway at Jungangno Station. Walk 19 min





Capturing
Daejeon

Living with
nature,

Ecological Tour

• Daecheong
Lake

Ecological Tour

Sikjongsan Mountain (596m)



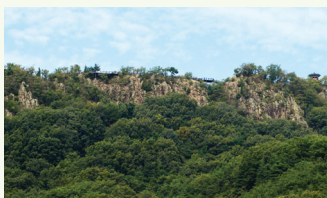
Sikjongsan Mountain, renowned for its well-preserved ecosystem, is home to famous Buddhist temples including Gosansa Temple and Gaesimsa Temple. Secheon Park is widely appreciated for its beautiful flower blossoms in spring, which, set against the nearby lake, It was formerly known as Beopjongsan Mountain. create a fabulous spectacle.

T 042) 274-1877

A Secheon-dong, Dong-gu

B Get off the bus 63, 611 at Secheon Park. Get off the bus 62, 71-1, 313, 606, 604, 607, 612, 618, 619 at Daejeon Dongsin Science High School. Get off the bus 60, 61-1, 61-2 at Biryong-dong Entrance

Gubongsan Mountain (264.1m)



Gubongsan Mountain is as exquisite as the surrounding landscape, and each of its nine peaks possesses its own unique beauty and charm. Legend has it that the gods were so impressed by the beauty of the mountain that they often descended from heaven to enjoy the view. Gapcheon Stream flows south of the mountain, and a steep cliff overlooks the stream, creating a mysterious view.

T 042) 288-2743

A Goegok-dong, Seo-gu

B Get off the bus 203, 212 at Daon Forest Apt. Walk 5 min

Bomunsan Mountain (457.6m)



It is both the biggest green park in Daejeon and the natural park located in an urban area in Korea. In addition to many cultural properties, it contains the Youth Square, Sajeong Park, an observation deck, a forest-healing center and other spaces where visitors can relax and heal themselves. Each of its valleys has about twenty mineral springs, and there is a rock that is said to resemble the Statue of Maitreya Buddha at Gochoksa Temple, which is perched beneath Sirubong Peak.

T 042) 270-7860~5

A Daesa-dong, Jung-gu

B Get off the bus 33-1, 115, 301, 311, 314, 315, 318 at Witsajeong 3-way Intersection. Walk 15 min

Bomunsan Forest Path



The forest path spreads out for 14.43 km long from Daesadong to Musu-dong including 12 villages, connected to the road of 8.25 km, which makes a circular path of 22.68 km.

- T** 042) 270-7860~5
- A** Daesa-dong, Jung-gu
- B** Get off the bus 33-1, 115, 311, 314, 301, 315, 318 at Witsajeong 3-way Intersection

Gyejoksan Mountain (423.6m)



Gyejoksan Mountain is famous for its spectacular 40km-long Forest Trail and the Hwangtotgil Trail, which begins at Jangdong Forest Park and stretches for 14.5 kilometers. Nearby Gyejoksanseong Fortress, which dates from the Three Kingdoms Period, has a perimeter of 1,037 meters.

- T** 042) 623-9909 (Jangdong Nature Recreational Center)
042) 608-5163 (Greenspace Management Division)
- A** Jang-dong, Daedeok-gu
- B** Get off the bus 74 at Jang-dong Forest Park

Daecheong Lake (Geumgang Lohas Daecheong Park)



The mountains surrounding Daecheong Lake and its crystal clear waters create an extraordinary landscape. Places worth visiting around the lake include an adjacent park, the Daecheong Dam Water Culture Center, a memorial hall, and an observation deck. The lakeside road is ideal for a leisurely drive spent admiring the fabulous view along the lake against a backdrop of surrounding mountains and forests.

- T** 042) 930-7240 (K-Water Daecheong Branch)
042) 250-1236, 1237 (Daecheongho Obaengni (500-ri) Road)
042) 608-5573 (Daecheong Park) / 042) 608-6595 (Daecheong Dam)
- A** 636, Daecheong-ro, Daedeok-gu
- B** Get off the bus 72-1, 72-2, 73 at Daecheong Dam (last stop)

Daecheong Dam Water Culture Center www.kwater.or.kr



It is a complex cultural facility built by the Korea Water Resource Corporation. Exhibition Hall I is designed for the theme of "water as a precious resource"; Exhibition Hall II displays the habitats of creatures that live in Daecheong Lake and Geumgang River; and Exhibition Hall III keeps records of, and attempts to reconstruct the life and culture of the people who once called Daecheong Lake home but were forced to leave the lake due to the construction of Daecheong Dam.

T 042) 930-7333

A 618-136, Daecheong-ro, Daedeok-gu

B Get off the bus 72-1, 72-2, 73 at Daecheong Dam (last stop)

Jangtaesan Recreational Forest www.jangtaesan.or.kr



It is a recreational forest that features a dense colony of metasequoias. Visitors can appreciate the exotic scene created by the metasequoias during a therapeutic stroll through the forest. The forest begins to unfold as you walk past the Yongtaeul Reservoir at the entrance of the mountain, and you can watch the sunset from the observation deck at the top of the mountain.

T 042) 270-7883

A 461, Jangan-ro, Seo-gu

B Get off the bus 20, 22 at Jangtaesan Natural Forest

Daedong Haneul Park



Daedong Haneul Park has been formed on the hill floor at Daldongnae in Dae-dong, Daejeon that was transformed to a mural village. You can appreciate the whole scenery of the city. Windmill erected in the park and Sarang rock located on the southwest side of the park are one of the places frequently visited by people.

T 042) 251-6672, 6675

A 182, Dongdaeyeon-ro 110beon-gil, Dong-gu

B Get off the bus 605, 608 at Woosong University entrance. Walk 9 min

Get off the bus 102, 311, 605, 608 at Woosong Information College. Walk 11 min

Jangdong Forest Park



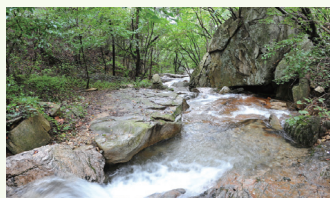
Opened in 1964, Jangdong Forest Park is a popular destination for relaxation and nature exploration. Trekking circuits run along the beautiful valleys under Gyeongju's Gyeongju Fortress, while sports facilities and a play park for children draw many visitors to the park.

T 042) 623-9909

A San 62, Jang-dong, Daedeok-gu

B Get off the bus 74 at Jang-dong Forest Park

Seongbukdong Forest Park



This forest park, which covers a mountainous area of 1,983,471 m², is equipped with forest paths and forest experience facilities. As it is located on the south ridge of the Geumsubong and Baekwunbong Peaks of Gyeryongsan Mountain, the forest is quite dense and the valley along the ridge is deep.

T 042) 825-3807

A 463, Seongbuk-ro, Yuseong-gu

B Get off the bus 41 at Seongbukdong Forest Park

Maninsan Recreational Forest



Maninsan Recreational Forest is a recreation complex that consists of campsites, picnic areas, therapeutic forests, and physical training facilities. A clean river runs through the valleys amid forests filled with broad-leaved trees. Best of all, it is easily reached from downtown Daejeon.

T 042) 270-8654

A 106, Sannae-ro, Dong-gu

B Get off the bus 501 at Maninsan Recreational Forest

Daejeon National Cemetery www.dnc.go.kr



The vast Daejeon National Cemetery (3,300,000 m²) comprises graves, the Memorial Tower, the Fountain of National Defence, and the Patriotic Spirit Exhibition Center. The cemetery is dedicated to honoring and paying tribute to deceased patriots who sacrificed their lives for the country.

T 042) 718-7114

A 251, Hyeonchungwon-ro, Yuseong-gu

B Get off the bus 48, 107 at Daejeon National Cemetery. Walk 2 min

S Get off the subway National Cemetery Station, Exit 2. Take shuttle bus.

Gapcheon Water Sport Experience Center



Visitors can take various water sports classes, such as canoe, dragon boat, pedal boat, and rafting, which are offered free of charge by the Daejeon Sports Council.

T 042-472-7731

A 965, Yudeung-ro, Seo-gu

B Get off the bus 121, 705, 911 at Daejeon Convention Center. Walk 12 min

Get off the bus 618 at National Heritage Center. Walk 9 min

Yuseong Hot Springs



Discovered during the Baekje Period, the water of Yuseong Hot Springs is rich in potassium, sodium, and other minerals that are both beneficial to the skin and effective in the treatment of various adult diseases. Yuseong spa area contains tourist hotels and various recreational facilities, including a footbath experience center that is open 24/7 free of charge for guests who want to rest their feet and relax.

T 042) 611-6570

A 52, Gyeryong-ro 123beon-gil, Yuseong-gu

B Get off the bus 48, 101, 102, 105, 106, 113, 114, 115, 117, 119, 121, 655, 704, 706, 911, 912, town shuttle bus 1, 5 at Yuseong Hot Springs Station, Exit 7, Walk 1 min

S Get off the subway at Yuseong Hot Springs Station, Exit 7, Walk 2 min

Yuseong Foot Bath Experience Center



As part of a project for increasing tourism to Yuseong Spa, the largest outdoor foot spa in Korea was opened in 2007. It is equipped with a covered pavilion so that visitors can enjoy foot spa even on rainy days. The foot spa is free for everyone.

T 042) 611-2445

A 89, Oncheon-ro, Yuseong-gu

B Get off the bus 101, 103, 105, 107, 116, 119, 312, 911 at Mannyonggyo Bridge

Get off the bus 11, 48, 102, 106, 107, 113, 114, 115, 116, 117, 121, 312, 655, 704, 706, 911, 912, local bus 1, shuttle bus 1, 5 at Yuseong Spa Station

Daejeon O-World www.oworld.kr



Daejeon O-World, the largest theme park in the central and southern parts of Korea, consists of Zoo Land, Flower Land, Joy Land, Bird Land, and Night Universe. The park offers a complete package of entertainment, education, and relaxation for all age groups to enjoy all year round.

T 042) 580-4820

A 70, Sajeonggongwon-ro, Jung-gu

B Get off the bus 33-1, 115, 301, 311, 314, 315, 318 at Daejeon O-World

Ppuri Park djjunggu.go.kr/hyo/index.do



Ppuri Park contains a special sculpture on which the origins of 224 Korean family names are inscribed. It is a unique space where Korean visitors can trace their roots while interacting closely with nature at the Park's arboretum, therapeutic forest, and wild flower complex.

T 042) 288-8300

A 79, Ppurigongwon-ro, Jung-gu

B Get off the bus 312, 313 at Hyo Culture Village & Ppuri Park

Hanbat Arboretum daejeon.go.kr/gar/index.do



Hanbat Arboretum, the largest garden in the central region, is an artificial facility created in an urban area. The arboretum consists of the Sensitivity Park, the Forest of Contemplation, a wetland, an eco forest, a shrub garden, and the Rose of Sharon Hill among its many attractions. Other facilities include the South Gate Plaza, walking trails, ponds, and sports facilities. The Hanbat Arboretum is loved by citizens as a spot for comfortable relaxation.

T 042) 270-8452~3

A 169, Dunsan-daero, Seo-gu

B Get off the bus 606, 618, 911 at Hanbat Arboretum

Get off the bus 121, 705, 707, 911, express bus 3, local bus 1 at Shinsegye Department Store.

Walk 14 min

Yurim Park



Located in front of Yuseong District Office, Yurim Park is known to be the best forest in downtown, which presents its beauty in various seasonal appearances with flowers, trees, pavillions and a lake. Its major facilities include the Bandoji lake, multi-purpose grass square, flower garden, outdoor stage, central square, pop-jet fountain, and rainbow bridge.

T 042) 824-4581

A 27, Eoeun-ro, Yuseong-gu

B Get off the bus 102, 106, 108, 113, 706, local bus 1 at Yurim Park

Get off the bus 104, 121, shuttle bus 5 at Yusong District Office

Sutonggol Valley

(Sutonggol Valley Experiential Learning Center, Gyeryongsan National Park Office)



Sutonggol is located 4km away from Yuseong and is situated between the Dodeokbong and Geumsubong peaks on Gyeryongsan Mountain. It is a deep valley with beautiful forest scenery. There are two natural waterfalls and a fitness facility that people love to visit.

T 042) 825-3006

A 47-3, Sutonggol-ro, Yuseong-gu

B Get off the bus 11, 102, 103, 104 at the starting point of Sutonggol. Walk 11 min

Bomunsan Happy Forest Path Center



The Bomunsan Eco-healing Center was established by remodelling the old office of Daesa Neighborhood Park at Bomunsan Mountain. The center consists of a gym and an office on the first basement level, a herbal tea shop and a footbath experience center on the ground floor, and an indoor education room, a meditation and yoga room, and various other facilities on the second floor.

T 042) 270-7878

A 440, Bomunsangongwon-ro, Jung-gu

B Get off the bus 802 at Bomunsan Park. Walk 12 min

Daejeon Aquarium www.djaquarium.com



Daejeon Aquarium, Korea's first aquarium and largest freshwater aquarium, was built in a cave that was used as an underground air raid shelter in case of war. You can have experience of touching and feeding not only fish but also animals you can rarely see in Korea.

T 042) 226-2100

A 469, Bomunsangongwon-ro, Jung-gu

B Get off the bus 108, 119, 313, 618, 619, 620 at Bomun Ogeori. Walk 17 min
Get off the bus 802 at Bomunsan Park

Chansaem Village chansaem.com



From experience to education, a village full of stories—Chansaem Village is a typical farming village where the beauty of Daecheonhoban Lake and the natural environment are in perfect harmony. It is the “first farm experience vacation village in Korea.”

T 042) 274-3399

A 703, Naengcheon-ro, Dong-gu

B Get off the bus 60, 71-1, 71-2 at Jik-dong (last stop)

Musu Cheonha Village www.musu.kr



A trouble free village.
Unlike other villages in the metropolitan area, this village has preserved its history, tradition, and farming culture.

T 042) 285-5557

A 5, Unnam-ro 85beon-gil, Jung-gu

B Get off the bus 33-1, 33-2 at Musu-dong

Seonchang Rural Experience Village



A village with 12 auspicious sites.
This village offers eco-friendly agricultural products such as rice, grapes and chili peppers, as well as dynamic and amusing experiences for visitors.

T 010-8543-5766

A 111, Gyebaek-ro 93beon-gil, Yuseong-gu

B Get off the bus 46 at Songjeong 2-tong

Get off the bus 45, 47, 47-1, 100, 202, 300, 2002 at Gyeryong Station

DaecheonghoDume Village



A beautiful village like a piece of art.
Residents who are friendly and kind like mountains, fields, and streams are preparing various rural experience programs.

T 010-9116-2705

A 97, Daecheonghosu-ro 1326beon-gil, Daedeok-gu, Daejeon

B Get off the bus 71-1, 71-2 at Ihyeon-dong

Milssam Village (Sedong) www.sedong.or.kr



Bright agriculture, lively farm.

The regional specialty of Sedong Milssam Village is Korean Wheat, so they offer various experience programs related with Korean wheat, such as making noodles and breads, planting the wheat seeds in the garden and stepping on the garden to make the seeds grow up well.

T 042) 825-0851

A 488, Sedong-ro, Yuseong-gu

B Get off the bus 42 at Shimter Rehabilitation Center for the Disabled

National Center for Forest Education, Daejeon

sooperang.or.kr/indvz/main.do?hmpgId=FA00005



The forest imbues us with happiness and hope. Living together, we often have precious memories in forests. The National Center for Forest Education provides various forest experience and education programs so that visitors can feel the value of forests and improve the health of their body and mind.

T 042) 718-1501

A 124 Supchewon-ro, Yuseong-gu

B Get off the bus 41 at National Center for Forest Education

Daejeon Healing Forest daejeon.go.kr/heal/index.do



Located near the urban area, the Daejeon Healing Forest has various plant resources from nature. Visitors can experience beautiful landscapes, sounds, and fragrances. A customized forest healing program is provided for relieving stress and refreshing body and mind.

T 042) 270-6594

A 195, Musu-dong, Jung-gu

B Get off the bus 30, 31, 32, 33-1, 33-2 at Chimsan-dong Entrance. Walk 40 min

Daejeon Wood Culture Experience Center

daejeon.go.kr/wood/index.do



Cultural experience in nature.

This place is where visitors can gain information and knowledge on the value of wood. People who have gotten tired of daily life can feel the warmth of wood and learn the wisdom of ancestors, enjoying the education and pastime culture.

T 042) 254-4565

A 442, Bomunsangongwon-ro, Jung-gu

B Get off the bus 108, 119, 313, 618, 619, 620 at Bomunogori. Walk 25 min
Get off the bus 802 at Bomunsan Park. Walk 15 min

Daecheong Water Sports Center sdaedeok.or.kr(Reservation page)



Enjoy the beautiful scenery of Geumgang River and exciting water sports!

This is the only spot where you can enjoy water sports on Geumgang River in Daejeon. Water bikes, cayaks and duck boats are ready for you.

T 010-5145-1464

A 167, Daecheong-ro, Daedeok-gu

B Get off the bus 703 at Sintanjin Station. Walk 29 min
Get off the bus 704 at Veterans Hospital (last stop). Walk 24 min

Gapcheon Nurigil Pump Track



This exceptional place is a hot place for dynamic, thrilling sports with its twisted and rugged roads.

It houses the nation's largest mountain bike training center and a pump track for bikes. All facilities are open free of charge, all year round(for free), except days with bad weather such as rain and snow.

T 042) 288-3924

A 315-5, Goegok-dong, Seo-gu

B Get off the bus 20, 21, 22, 23, 24, 25, 26 at Goegok-dong, Gorigol. Walk 15 min
Get off the bus 615, 703 at Baengmongnyeon Apartment. Walk 25 min

Capturing
Daejeon



Walking, seeing,
and feeling together,

Pedestrian Tour

• Daecheongho
Obaengni
(500-ri) Road

Pedestrian Tour



Daejeon
Tour website

Daejeon Dullesan Trail

The Daejeon Dullesan Trail is a mountain trail that connects the mountains surrounding the city of Daejeon. A group of likeminded citizens created the trail to enable more Daejeon citizens to enjoy trekking more easily. The trail begins at Bomunsan Mountain and covers 133.1 kilometers in total, connecting Maninsan, Sikjangsan and Gyejoksan Mountains. The trail consists of twelve sections which are clearly marked with signs and direction boards.



Sectional course of Daejeon Dullesan-gil

1	Bomunsan Sirubong Peak - Odosan Mt - Geumdonggogae Pass	9.3km/6h	Bomunsan Youth Square ▶ Geumdonggogae Pass
2	Geumdonggogae Pass - Tteokgalbong Pass - Maninsan Mt - Taejotaesil	13.1km/7.5h	Pine on Geumdonggogae Pass ▶ Maninsan Service Area
3	Taejotaesil - Madalryeong - Guksabong - Dakjae	12.5km/7.5h	Maninsan Nature Education Center ▶ Samgoe-dong Deoksan Village
4	Dak-jae - Gollyongjae Pass - Sikjangsan Mt - Secheongogae Pass	13.6km/7.5h	Deoksan Village Zelkova ▶ Secheongogae Pass
5	Secheongogae Pass - Jilhyeonseong - Gyejoksan Mt	11km/6.5h	Dongsin High School bus stop ▶ Yonghwa Temple parking lot
6	Gyejoksan Mt - Jangdonggogae Pass - Geumgang - Obongsan Mt entrance	13.5km/7.5h	Yonghwa Temple parking lot ▶ Bongsan-dong bus stop
7	Obongsan Mt - Bodeokbong - Geumbyeongsan Mt - Geochilmegigogae Pass	12.2km/7.5h	Bongsan-dong bus stop ▶ Ansan-dong bus stop
8	Ansan-dong Fortress - Usanbong - Gaphasan Mt - Sapjae	9km/6h	Ansan-dong Eoduni Village entrance ▶ Gyeryong Service Area
9	Sapjae - Dodeokbong - Geumsubong - Bingyesan Mt	10km/6h	Gyeryong Service Area ▶ Sutonggol parking lot
10	Bingsan Mt - Yongbawi - Sanjangsan Mt - Bangdong Reservoir	7.9km/5.5h	Sutonggol parking lot ▶ Bangdong Reservoir (Dolgwakjae)
11	Bangdong Reservoir - Gubongsan Mt - Gapcheon Stream - Jaenggibong	9.4km/6.5h	Bangdong Reservoir entrance ▶ Yudeungcheon Anyeonggyo Bridge
12	Janggibong - Ppuri Park - Kkachigogae Pass - Sirubong	11.5km/7h	Yudeungcheon Anyeonggyo Bridge ▶ Bomunsan Youth Square

Gyejoksan Mountain Red Clay Trail

Jangdong Forest Park spans the Fabulous 100-ri (40 km) Forest Trail in Gaejoksan Mountain: a section of the forest trail is made into a red clay trail that stretches 14.5 km. The trails are open to the public from spring to fall. You can enjoy a foot massage in the soft, warm red clay and a healing stroll in the forest at the same time.



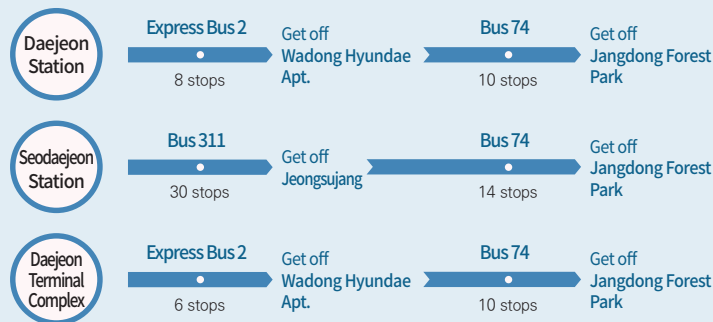
Direction

Address Jangdong Forest Park, San 62, Jang-dong, Daedeok-gu

KTX Seoul 1 hour, Gwangju 1 hour, Busan 1 hours 50 minutes

Car Seoul 2 hours 40 minutes, Gwangju 2 hours 20 minutes, Busan 3 hours 20 minutes

City Bus



Daecheongho Obaengni-gil

Daecheongho Obaengni (500-ri) Road extends for about 200 kilometers, starting from Daecheong Dam in Sintanjin, Daejeon, and connecting Daedeok-gu, Okcheon, Boeun and Cheongju in Chungcheongbuk-do. Hikers will encounter many breathtaking scenic views along the trail, including Daecheongho Lake, which has some interesting stories to tell.

Course for Daecheongho Obaengni (500-ri) Tour

- A total of 253km, 123 hrs.
- 21 sections (Daejeon: 6 sections 59 km, Chungcheongbuk-do: 15 sections 188km)



1 Dume Village Trail (11.5km, 6 hrs)

Daecheong Dam ▶ Sutgogae Pass
▶ Miho-dong Fortress ▶ Bisang
Yeosu-ro ▶ Samjeong Village ▶
Ihyeon-dong Tall Wild Grass Field



2 Chansaem Village Road (10km, 5 hrs)

Ihyeon-dong Tall Wild Grass Field ▶
Chansaem Village ▶ Seongchi
Fortress ▶ Chansaemjeong Pavilion
▶ Naengcheon bus last stop



3 Hoban Yeollyeo Trail (7km, 4 hrs)

Naengcheon bus last stop ▶
Saseumgol entrance ▶
Naengcheon-gil Samgeori ▶
Mireukwon ▶ Witmalmo



4 Hoban Nangman (Romance) Trail (12.5km, 6 hrs)

Witmalmo ▶ TV series filming
site ▶ Natural Ecology Hall ▶
Chu-dong Intake Tower ▶
Lotus Village ▶ Eonggogae Pass ▶
Sinsanggyo Bridge



5 Baekgolsanseong Fortress Nangman (Romance) Trail (13km, 6 hrs)

Sinsanggyo Bridge ▶ Bakatagam
Platform ▶ Gangsalbong ▶
Baekgolsanseong Fortress ▶
Bangchukgol-gil ▶ Wajeong
Samgeori



6 Jujube Tree Trail (16km, 8 hrs)

Wajeong Samgeori ▶
Seonghwangdanggogae Pass
▶ Beopsu-ri ▶ Eobu-dong ▶
Saeum-ri ▶ Hoenam Bridge ▶
Namdaemunyo Bridge



7 Buso Damak Trail (14km, 6 hrs)

Kkotbong Gallim-gil ▶ Bang-a-sil
Raw Rish Town ▶ Geomeokgol ▶
Gonggokjae ▶ Busodamak ▶
Chuso-ri Jeolgot



8 Seonbi Trail (13km, 6 hrs)

Chuso-ri Jeolgot ▶ Hwanpyeong-ri
▶ Seohwacheon Stream ▶ Boo-ri ▶
Seokgyeol Village ▶ Dolgeorigogae
Pass



9 Jiyong Hyangsu Trail (15km, 5 hrs)

Jingol Dock ▶ Choengpungjeong
Pavilion ▶ Dolgeorigogae Pass ▶
Shinchon Restaurant Street ▶
Myeoneurijae ▶ Maseongsan Mt ▶
Birth Home of Yuk Young-su ▶
Birth Home of Jeong Ji-yong



10 Myeoneuri Nunmul Trail (11km, 6 hrs)

Janggyedaegyo Bridge ▶
Iseobong Peak ▶ Observatory
▶ Myeoneurijae ▶ Jangseung Park
▶ Anteogyo Bridge ▶ Dolmen Park



11 Maltigogae Trail (11km, 5 hrs)

Dolmen Park ▶ Anteo Village ▶
Garinae Farm Galrimgil ▶
Jiyang-ri Galrimgil ▶ Aja School



12 Pureundeul Bidan Trail (13km, 6 hrs)

Aja School ▶ Malti Village ▶
Witchyeong-dong ▶ Araetcheong-
dong ▶ Gadeokgyo Bridge ▶
Misan ▶ Yeonju-ri ▶ Annam-
myeon Office



13 Hanbando Trail (13km, 7 hrs)

Annam-myeon Office ▶
Dokrakjeong ▶ Goseong
▶ Geumjeonggol ▶ Hanbando
Observatory ▶ Hwain ▶ Geolpo
entrance ▶ Shinchongyo Bridge



14 Janggogae Gubul Trail (8.5km, 5 hrs)

Shinchongyo Bridge ▶ Shinchon
Hanul Village ▶ Hwagol Galrimgil
▶ Janggogae Pass ▶ Dapyang
3-gyo Bridge ▶ Jigyeong-ri



15 Gureum Gogae Trail (14km, 7 hrs)

Eunun-ri ▶ Yeonmok Village ▶
Bunjeori Rural Experience Village
▶ Geogyo-ri



16 Beollat Hanji Maeul Trail (10km, 5 hrs)

Hoenam-myeong Office ▶
Namdaemunyo Bridge ▶
Geoguri ▶ 325 Peak ▶ Beollat
▶ Munui-myeon



17 Sahyang Trail (14km, 7 hrs)

Sojeongyo Samgeori ▶ 257 Bong
▶ 228 Bong ▶ Dongbok Oh Family's
Monument ▶ Hugok-ri
▶ Sahyangbi



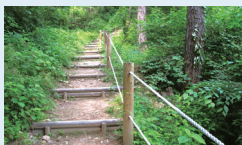
18 Jangsubawi Trail (12km, 6 hrs)

Sojeon-ri Health Center ▶ Wolriisa
entrance ▶ Mundeok-ri ▶
Jangsubawi Rock ▶ Madong-gil
Samgeori ▶ Sangsan Village



19 Cheongnamdae Sasaek Trail (12.5km, 6 hrs)

Sangsan Village ▶ 326 Peak ▶
Barbed Wire Guard Post ▶ Jwagol
Samgeori ▶ Small Dragon Cave ▶
Nohyeon-ri Wetland Park



20 Munui Gwageo Maeul Trail (9km, 4.5 hrs)

Nohyeon Wetland Park ▶ Water
Tower ▶ Munui Elementary
School ▶ Cheongju Youth Training
Center ▶ Munui Cultural Foundation
▶ Munuidaegyo Bridge



21 Daechong Lohas Trail (13km, 6 hrs 30min)

Munuidaegyo Bridge ▶ Guryongsan
Mountain ▶ Jangseung Park ▶
Jeonggijil Dam ▶ Daechongho
Lohas Road ▶ Daechong Dam ▶
Daechongdong Water Culture
Center

Daechong Hoban-gil

Daechonghoban-gil is a series of eleven lakeside paths spanning a total of 57.5 kilometers between the Daechong Culture Exhibition Hall and the Chudong Eco Center. Connecting Daedeok-gu and Dong-gu, Daechonghoban-gil is an ideal walking trail for families and couples whatever the season. There are also three bike paths.



Hoban-gil Course 1

- 1 Geumgang LOHAS Happy Road (Deck Hiking Road)
Daechong Dam Water Culture Center ▶ Daechonggyo Bridge
▶ Parking Place 6.0km, 1~2hrs



Hoban-gil Course 2

- 2-1 Dume Villae Parking Place ▶ Bench on the tops of the Peak 3
▶ Villae Parking Place 4.0km, 1~2hrs
- 2-2 Dume Villae Parking Place ▶ Jebisanseonggogae Pass
▶ Villae Parking Place 8.5km, 2~3hrs



Hoban-gil Course 4

- 4-1 Sinsangdong Closed Road Parking Place
▶ Geumseong Village
▶ Sinseonbawi Rock 2.5km, 1hrs
- 4-2 Approach to Geumseong Village ▶ Gobongsanseong Fortress
▶ Sinsangdong Closed Road Parking Place 6.0km, 1~2hrs



Hoban-gil Course 3

- 3-1 Chansaem Village
▶ Nogosanseong Fortress
▶ Chansaem Village Hall 3.5km, 1~2hrs
- 3-2 Seonghwangdanggoga Pass
▶ Seongchi Fortress
▶ Chansaem Village Hall 7.0km, 2~3hrs



Hoban-gil Course 5

- 5-1 Sinsangdong Closed Road Parking Place
▶ Heungjin Village Tall Wild Grass Trail
▶ Sinsangdong Reeds Field 3.0km, 1hrs
- 5-2 Sinsangdong Reeds Field ▶ Baekgolsanseong Fortress Roundtrip ▶ Sinsangdong Closed Road Parking Place 6.0km, 2~3hrs



Hoban-gil Course 6

- 6-1 Chudong Parking Place
▶ View Point
▶ Natural Ecology Hall 4.5km, 1~2hrs
- 6-2 Weekend Farm entrance ▶ Lotus Village
▶ Chudong Parking Place 6.5km, 2~3hrs



Bicycle Trail (3 courses)

- Course 1** | Chansaem Village ▶ Galjeong-dong, Daedeok-gu
▶ Busu-dong last bus stop round trip 7.0km, 30~40min
- Course 2** | Chansaem Village ▶ Yanggure-gil ▶ Gwandongmyoryeo round trip 14.4km, 1hr
- Course 3** | Sinsang-dong Tonggunjeong Restaurant ▶ Heungjin Village ▶ Sinsangdong Closed Road Parking Place 5.2km, 30min



Daedeok Science Trail

A dense forest of knowledge, which consists of several research institutes, observatories, museums, and science halls, surrounds the Daedeok Science Road of Daedeok R&D Special District, which is a place where science and nature meet. Unlike other hiking paths, this road is a family-type olle-gil trail where visitors can tour the research complex of the most advanced science related facilities, as well as mountains parks, and streams.

Course
1

Maebong - Useongisan Trail

Expo Science Park ▶ Useongisan (Doryongjeong Pavilion) ▶ Hwaam Negeori ▶ Taejeonsa Temple
▶ Hill behind Daedeok University
▶ Maebong Park ▶ Daejeon Education & Science Research Institute ▶ Expo Science Park
[11.1km, 3.4hrs](#)

Course
2

Sinseong - Seongdusan Trail

National Science Museum ▶ Seongdusan Park
▶ Daejeon Observatory ▶ Sanseong Park ▶
Hill behind Chungnam National University
▶ Gungdong Park ▶ Yuseong-gu Office ▶
National Science Museum
[10.0km, 3.2hrs](#)



📍 Driving Directions

Gyeongbu Expressway Hoedeok IC → Honam Expressway (To Gwangju) → Bukdaejeon IC
Honam Expressway Honam Expressway (To Daejeon) → Bukdaejeon IC
Daejeon-Tongyeong Expressway

Daejeon Tongyeong Expressway (To Daejeon) → Nambu Circular Road (To Daejeon) → Enter Gyeongbu Expressway (To Seoul) → Hoedeok IC → Honam Expressway (To Gwangju) → Bukdaejeon IC

📍 Public Transportation (Bus)

Bus 618, 707, 911, local bus 1, Express Bus 3 Get off DCC

Bus 121, 705, 707, 911, Local bus 1 Get off at Daejeon Convention Center (Trade Exhibition Hall)

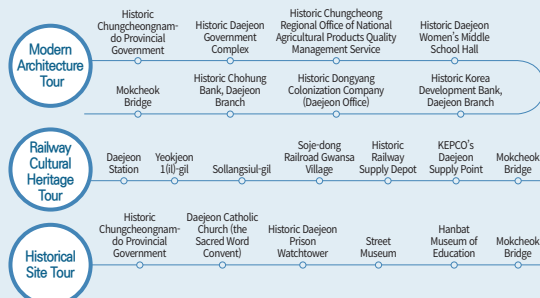
Bus 301, 318, 606, 918, 1001, Shuttle bus 5 Get off at Shinsegye Department Store

Bus 104, 121, 604, shuttle bus 5, local bus 1 Get off at National Science Museum

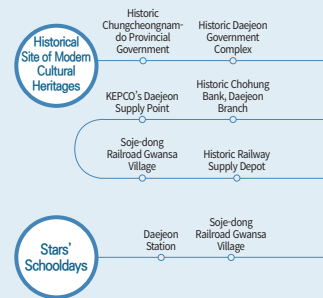
Tourist Guide on Old Downtown of Daejeon



Quarter-of-a-day Tour in Daejeon's Old Downtown



Half-of-a-day Tour in Daejeon's Old Downtown



Source of the subway map: Road School



⑥ Jung-gu Office Station
Historic Chungcheongnam-do Office Building

⑤ Jungangno Station
Daeheung-dong
Small Theater Play



① Panam Station
Daecheongho Natural Ecology Hall

④ Daejeon Station
Jungang Market



⑤ Jungangno Station
Euneungjeongi
Sky Road
Seongsimdang



③ Daedong Station
Daedong Haneul Park



⑪ City Hall

Tanbang
Rodeo Street,
Café Street

Daejeon Station ④
Daejeongcheon Cherry Blossom Trail



⑥ Jung-gu Office Station
Temiorae (former Chungcheongnam-do
governor's residence)

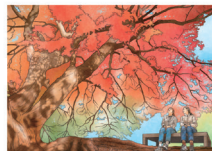
⑨ Yongmun



Oryong

Seodaeseon
Negeori

Daejeon Station
Jungang Market
Soje-dong Cheoldo Gwansa
Village

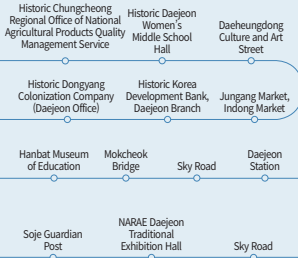


Panam Station ①
Secheon Recreation Area

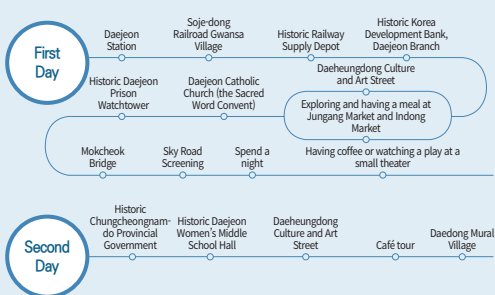
Sinheung

Panam

Visit modern cultural heritage as well as historical sites



Overnight Tour in Daejeon's Old Downtown



Various colors of the old downtown

Three Beautiful Bike Paths in Daejeon

Daecheongho Eco Bike Path, **Couple Road**



📍 Tour Course

Daecheonghoban Eco Park ▶ Daecheongho Natural Ecology Hall ▶ Place of scenic beauty
5.8km (round trip), 1 hr 30 min. (15km/h)

📍 Direction

Approximately 15 km from the bus stop at the east square of Daejeon station to Daecheonghoban Eco Park

City bus: Bus 60

On Daecheong Lakeside, you can immerse yourself in the beautiful scenery of Daecheong Lake, including the rich reed fields full of autumnal sentiment. There are many things to see in the surrounding area, such as the natural waterside park, natural ecology center, and Chudong Wetland Protection Area. Nearby, there are abundant ecological and tourism resources, such as the filming location of 'Sad Love Story,' the rural experience village Chansaem Village, Lotus Village, and Shinsun Rock. It is a popular national attraction, boasting beautiful scenery in all four seasons, making it a great course to make memories while enjoying a bicycle ride with your lover or family.

Spectacle

Daecheongho Natural Ecology Hall

Small Zoo, Eco Pond, Wild Flower Garden, Mushroom Farm ☎ 042) 251-4781

Daecheongho Natural Waterside Park

Chudong Wetland, Field of Tall Wildgrass ☎ 042) 251-4755

Food

Garaewool Restaurant Grilled Duck Patties, Boiled Duck with Scorched Rice

📍 8, Daecheonghosu-ro 585beon-gil, Dong-gu ☎ 042) 274-2023

Accommodation

Daecheongho Pension 📍 205, Hoenam-ro 275beon-gil, Dong-gu ☎ 010-9417-0025

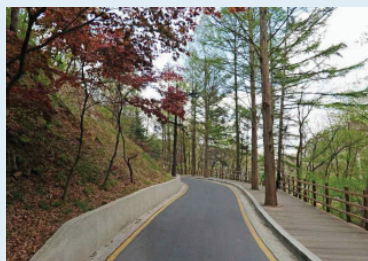
Amenities

Daecheongho Natural Ecology Hall Parking lot, pram, wheelchair, nappy changing table, etc.

Tour Tip

The tall wild grass field of Daecheonghoban in ripen autumn is the spot to enjoy the scenic view of the lake.

Bomunsan Bike Path, **Healthy Road**



📍 Tour Course

Entrance of Bomunsan Mountain ▶ Youth Square ▶ Sajeong Park ▶ Daejeon O-World ▶ Ppuri Park

10km, 2 hrs (round trip)

📍 Direction

2.5 km from Daejeon station to the entrance of Bomunsan Mountain

City bus: 802

Excellent course to look after your health with clean air. Along with the good access, it is a suitable course for those who love biking as it starts from a park and also ends at a park. Near the urban area, it offers scenic views of mountains and parks each season. In summer in particular, the shade of the trees of Bomunsan Mountain feels cool.

Spectacle

Daejeon O-World Thrilling Activity, Bird Land (A 70, Sajeonggongwon-ro, Jung-gu (T 042) 580-4820

Hyo World "Hyo" Cultural Activity, Korean Genealogy Museum (A 47, Ppurigongwon-ro, Jung-gu (T 042) 288-8200

Food

Banchan Sikdang Boiled barley, Pajeon (Welsh-onion pancake) (A 484, Bomunsangongwon-ro, Jung-gu (T 042) 253-2794

Dajeong Sikdang Boiled barley, Soft tofu stew, etc.
(A 496, Bomunsangongwon-ro, Jung-gu (T 042) 252-4322

Accommodation

Hyo Culture Village
(A 47, Ppurigongwon-ro, Jung-gu (T 042) 288-8200

Amenities

Bicycle rack



Tour Tip

- Ppuri Park holds Daejeon Hyo Culture Festival every year, which is full of things to watch and enjoy.
- At the O-World Theme Park, the whole family can enjoy various attractions such as Zoo Land, Joy Land, Flower Land, and Bird Land.

Lohas (Sintanjin) Bike Path, Tour Road



📍 Tour Course

Sintanjin Station ▶ Hyeondokyo Bridge ▶
Daecheongdaegyo Bridge ▶ Leports Center
▶ Mihogyo Bridge ▶ Daecheong Park
7km, 1 h (round trip, 15km/h)

📍 Direction

Walk towards Hyeondogyo Bridge after getting off at Sintanjin station
Turn left and walk towards Sintanjin after passing Sintanjin IC (1.3km to Sintanjin station)

As the starting and ending point of the Geumgang Bicycle Path of the National Cycle Route and the section where the Tour de Korea 2016 was held, it is conveniently accessible by public transportation, such as Shintanjin Station and Shintanjin IC. It is located near the heart of the city, encouraging a family excursion or bicycle walk. You can enjoy nature and romance at the Lohas Family Park and various leisure activities like water sports at the sports center.

Spectacle

Daecheong Water Sports Center Canoe, kayak, duck boat, water bike, water ball etc.

☎ 042) 932-7333

Food

Pungcheonjangeo Restaurant Grilled Eel, Spicy Fish Stew

📍 166-1, Daecheong-ro, Daedeok-gu ☎ 042) 932-0146

Daecheong Garden Boiled barley, Poached Chicken with Rice, Sumac Chicken

📍 493-12, Daecheong-ro, Daedeok-gu ☎ 042) 934-5290

Amenities

Bicycle rack, Tashu (public bike rental system)

available through the route



Tour Tip

After feasting your eyes on the beautiful scene of Geumgang river, you can participate in various activities for the auto camping, glamping, caravan at Lohas family's campground.



Capturing
Daejeon

For joyous tour at
Daejeon,

Information for Tourists

• Hanbat
Arboretum

Information for Tourists

Daejeon Traffic
Information Center

Transport information

Railway

Type	Operating sector	Distance (km)	Duration	Remark
KTX	Daejeon-Seoul	159.8	1:00	Information Center at Daejeon Station and Seodaejeon Station ☎ 1544-7788
	Daejeon-Busan	248.7	1:40	
	Seodaejeon-Seoul	156.6	1:00	
	Seodaejeon-Yongsan	157.6	1:02	
	Seodaejeon-Mokpo	241.6	2:10	
SRT	Daejeon-Suseo	153.8	58 min.	
	Daejeon-Busan	159.8	1:40	
ITX-Saemaeul Train	Daejeon-Seoul	166.8	1:40	
	Daejeon-Busan	277.7	3:00	
	Seodaejeon-Yongsan	170.0	1:40	
	Seodaejeon-Mokpo	250.6	2:45	

※ The above operating hours, number of sessions, and fees are subject to change.

Express bus

Operating sector	Distance (km)	Duration	Remark
Daejeon-Seoul	153.2	2:00	Daejeon Terminal Complex ☎ 1668-3300
Daejeon-Incheon	174	2:00	
Daejeon-Cheonan	72.9	1:00	
Daejeon-Busan	254.7	3:00	Yuseong Kumho Express Bus Terminal ☎ 822-0386
Daejeon-Dongdaegu	148.7	2:00	
Daejeon-Jeonju	90.4	1:20	Daejeon Government Complex Dunsan Express Bus Stop ☎ 485-0181
Daejeon-Gwangju	178.6	2:20	
Daejeon-Gangneung	277.6	3:20	
Yuseong-Seoul	157.2	2:10	
Yuseong-Gwangju	165.7	2:00	

Airport Limousine

Operating sector	Time	Remark
Daejeon→Incheon International Airport	03:20~19:10	Incheon International Airport ☎ 1577-2600 Cheongju International Airport ☎ 1661-2626
Incheon International Airport→Daejeon	T1 06:00~23:50 T2 06:00~23:30	
Daejeon→Cheongju International Airport	06:35~16:30	
Cheongju International Airport→Daejeon	11:50~21:00	

Intercity Bus

Daejeon Terminal Complex To Seosan, Dangjin, Cheongju, Boeun, Muju ☎ 1668-3300

Daejeon Southwest Terminal To Gongju, Nonsan, Buyeo, Daecheon ☎ 1688-5406

Daejeon Government Complex Dunsan Intercity Bus Stop To Incheon International Airport, Gimpo

International Airport, Dong-Seoul, Bucheon, Seongnam ☎ 1666-7638

Yuseong Intercity Bus Stop To Dong-Seoul, Gangneung, Sokcho, Wonju, Incheon, Suwon, Seongnam, Jeonju, Gunsan, Cheongju, Chungju, Taean, Boryeong, Cheongyang, Hongseong, Nonsan, Yesan, Geumsan ☎ 1688-5406

BRT (B1) Routes

(Credit cards)

Classification	General	Adolescents	Children
Within the Sejong City Exhibition Hall	2,000	1,100	700
Daejeon↔Sejong	2,300	1,400	1,000
Sejong ↔Osong Station	2,600	1,700	1,300

Transfer Information

- Transfer to Daejeon city bus, urban railway, local bus is available at Daejeon station (BRT). Transfer to Sejong city bus is available at Banseok station (BRT).
- When the travelers transfer to the other transport, the extra cost may be charged. The transfer discount is available up to 3 times (the maximum number of the services is four times).
- The service interval of BRT at Daejeon station is 15 minutes on average; transfer is available within 30 minutes
* Transfer interval: 30 minutes in the case that the service interval is within 15 minutes; 60 minutes in the case that the service interval is over 15 minutes.
- The passengers are required to scan their cards upon their alight as the zone-based fare is applied to the journey from Daejeon station-Osong station (BRT).
- The metropolitan express bus runs the route, excluded from the discount for meritorious persons and the free ride.

Happy City Transfer System

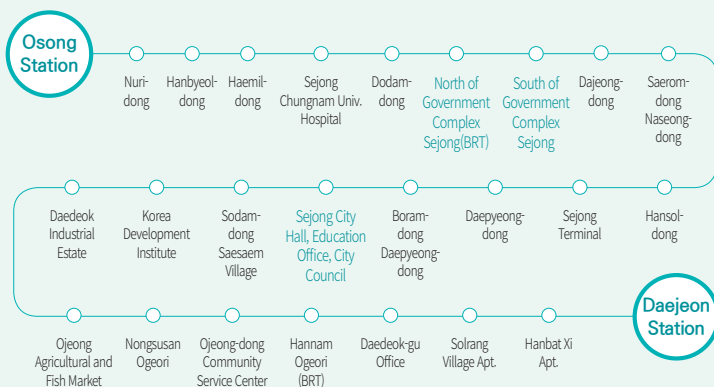
- You can transfer between all public transportation (including metropolitan buses (BRT), city buses, village buses, and subways) in Sejong City, Cheongju City, and Gongju City.
- In Daejeon, the transfer is allowed only on designated metropolitan routes (a total of 28 routes)

Daejeon 72, 75, 107, 1001, 1002, B1

Sejong City B2, B4, 69, 300, 661, 691, 655, 1000, 1001, 1004, 1005, M1, 1003

Gongju City 300, 302, 340, 342, 407 / Cheongju City 407 / Hyeondokyo fixed routes 1~3, Inquiry for fixed route 1

Detailed Information on Routes



Call Taxi

Name	No. of taxis	Call number
Yangban Call	3,000	586-8000
Hanbit Call	1,500	525-0000
Hanbat S Call	500	242-8800

Subway Lines Information

Up Train (Banseok → Panam)

Station Name	First Train	Last Train	
		Panam	Government Complex
Banseok	5:30	23:32	23:42
Jijok	5:32	23:34	23:44
Noeun	5:34	23:36	23:46
World Cup Stadium	5:35	23:37	23:47
National Cemetery	5:37	23:39	23:49
Guam	5:30	23:41	23:51
Yuseong Hot Springs Station	5:32	23:43	23:53
Gapcheon	5:34	23:45	23:55
Wolpyeong	5:36	23:47	23:57
Galma	5:37	23:48	23:58
Government Complex	5:30	23:50	24:00
City Hall	5:32	23:52	
Tanbang	5:33	23:54	
Yongmun	5:36	23:56	
Oryong	5:38	23:58	
Seodaejeon Negeori	5:40	24:00	
Jung-gu Office	5:42	24:02	
Jungangno	5:44	24:04	
Daejeon	5:45	24:06	
Daedong	5:47	24:08	
Sinheung	5:49	24:10	
Panam	5:51	24:12	

Down Train (Panam → Banseok)

Station Name	First Train	Last Train	
		Banseok	Government Complex
Panam	5:30	23:28	23:40
Sinheung	5:32	23:30	23:42
Daedong	5:34	23:32	23:44
Daejeon	5:36	23:34	23:46
Jungangno	5:38	23:36	23:48
Jung-gu Office	5:39	23:37	23:49
Seodaejeon Negeori	5:41	23:39	23:51
Oryong	5:43	23:41	23:53
Yongmun	5:45	23:43	23:55
Tanbang	5:48	23:46	23:58
City Hall	5:49	23:47	23:59
Government Complex	5:51	23:49	24:01
Galma	5:53	23:51	24:03
Wolpyeong	5:55	23:53	24:05
Gapcheon	5:57	23:55	24:07
Yuseong Hot Springs Station	5:59	23:57	24:09
Guam	6:01	23:59	24:11
National Cemetery	6:02	24:00	24:12
World Cup Stadium	6:04	24:02	24:14
Noeun	6:06	24:04	24:16
Jijok	6:08	24:06	24:18
Banseok	6:10	24:08	24:20

Route Map



Restaurants and Lodging Information

Six Gourmet Foods of Daejeon

042) 270-4873 (Food Safety Department)



Taste of Daejeon
(Daejeon City Hall)



Gujeuk Dotorimuk Soup (acorn jelly soup)

Beginning to be made in the early 1980s as a supplementary means of living by farming households, acorn jelly has become Daejeon's specialty food. This dish is made with sliced acorn jelly, kimchi, and dried seaweed served in a broth base made of radish, anchovies, and kelp.



Samgyetang (ginseng chicken soup)

This recipe for samgyetang (ginseng chicken soup) is prepared with ginseng grown in Geumsan, Korea's No. 1 ginseng-growing area and chicken raised in Yeonsan, and differs from the regular samgyetang recipe. Considered a special health food, samgyetang is especially good for children and the elderly because it has a mild and clean taste and is easy to digest.



Dolsotbap (hot pot rice)

It is popular particularly among the older generation because it tastes just like rice cooked in an old-fashioned iron pot. The restaurant serves side dishes made with fresh vegetables that are grown in farms in the vicinity of Daejeon. Side dishes prepared with wild greens freshly picked on nearby mountains are full of natural flavors and taste delicious.



Seolleongtang (ox bone soup)

This ox bone soup has become Daejeon's popular local food since a restaurant near Daejeon Station, which specialized in this soup, became very famous 40 years ago. The soup base is obtained after boiling beef bones over the course of several hours. Radish Kimchi and cabbage Kimchi are served as sidedishes.



Sutgol Naengmyeon (cold buckwheat noodles)

Opened in 1951, Sutgol Naengmyeon (cold buckwheat noodles) is now run by the great-grandson of its founder. The restaurant has won over loyal customers from all walks of life because it serves authentic Pyeongyang-style cold buckwheat noodles. The noodles are tender and the soup, made with radish water kimchi broth, is deliciously tasty, loved by people of all ages.



Daechongho Maeuntang (spicy freshwater fish stew)

Mandarin fishes caught in the Geumgang River used to be a regional specialty and were presented as such to the kings of the Joseon Dynasty. Sintanjin has long been known for dishes prepared with freshwater fish as their main ingredient. After the dam was built in 1981, spicy fish stew restaurants began to be open and now the area is reputed to serve the best spicy fish stews made with freshwater fish caught in the pristine, pollution-free water of the Geumgang River.

30 Years old Traditional Restaurants with 3 Generations

Name	Location	Type of Food	Contact
Baekcheonjip	119, Junggyo-ro, Dong-gu,	Sundae and Rice Soup	226-0140
Gangdong Restaurant	6, Dongseo-daero 1705beon-gil, Dong-gu	Rich Soybean Paste	625-8605
Wanggwon Restaurant	6, Seonhwa-ro 196beon-gil, Dong-gu	Bean Sprout Rice	221-1663
Jeokdeok Restaurant	220-3, Uam-ro, Dong-gu	Braised Pigs' Feet	633-4293
Samdaejae Jeontong Kalguksu	13, Daejeon-ro 825beon-gil, Dong-gu	Noodle Soup	257-5432
Taehwajang	78, Jungang-ro 203beon-gil, Dong-gu	Noodles in Black Bean Sauce	256-2407
Pyeongyang Sumdobu	381, Daejeon-ro, Dong-gu	Soft Tofu	284-4141
Gyeongdong Ojingeoguksu	369, Gyejok-ro, Dong-gu	Squid Noodles	626-5707
Junggukseong	66, Daejeon-ro 815beon-gil, Dong-gu	Noodles in Black Bean Sauce	254-3353
Byeolcheonji	29, Sanseo-ro 1659beon-gil, Dong-gu	Whole Chicken Soup with Medicinal Herbs	271-0207
Daejoen Galbi Jip	419-8, Daejeoncheonseo-ro, Jung-gu	Grilled Pork Galbi	254-0758
Seongsimdang	15, Daejong-ro 480beon-gil, Jung-gu	Bakery	1588-8069
Sonamujip	59, Daejong-ro 460beon-gil, Jung-gu	Squid Noodle Soup	256-1464
Hakseon Restaurant	26, Bomun-ro 337beon-gil, Jung-gu	Kimchi Jjigae	256-4057
Hanyeong Restaurant	6, Gyeryong-ro 874beon-gil, Jung-gu	Spicy Braised Chicken	533-2644
Daedeulbo Hamheung Myeonok	39, Gyebaek-ro 1583beon-gil, Jung-gu	Cold Buckwheat Noodles	522-5900
Sariwon Myeonok	62, Junggyo-ro, Jung-gu	Cold Buckwheat Noodles	256-6506
Geumkwang Hanjeongsik	127, Chungmu-ro, Jung-gu	Korean Table d'hote	226-8686
Yeona Sikdang	57-9, Yucheon-ro, Jung-gu	Braised Dried Pollack, Dried Pollack Soup	583-8956
Choryang Sikdang	58, Jungang-ro 121beon-gil, Jung-gu	Bulgogi Set Menu	255-4563
Jinlojip	45-5, Junggyo-ro, Jung-gu	Stir-fried Bean Curd	226-0914
Jeong Sikdang	37-13, Jungang-ro 130beon-gil, Jung-gu	Spicy Braised Chicken, Mung Bean Pancake	257-5055
Gwangcheon Restaurant	29, Daejong-ro 505beon-gil, Jung-gu	Stir-fried Bean Curd, Noodle Soup	226-4751
Yeongdong Restaurant	27-9, Gyeryong-ro 874beon-gil, Jung-gu	Spicy Braised Chicken, Goat Hot Pot	531-6016
Sariwon	77, Dunsan-ro 31beon-gil, Seo-gu	Cold Buckwheat Noodles	487-4209
Gwangcheon Restaurant	670-16, Gyeryong-ro, Seo-gu	Goat Hot Pot	533-4415
Mansu Bulgog	38, Jangdae-ro, Yuseong-gu	Spicy Stir-fried Marinated Pork	822-2257
Sutgol Wonjo Naengmyeon Sikdang	122, Sinseong-ro, Yuseong-gu	Cold Buckwheat Noodles	861-6730
Hongcheon Restaurant	8, Gyeryong-ro 74 beon-gil, Yuseong-gu	Bean Sprout Bibimbap	822-3175
Yeonghwabanjeom	46, Sintanjindong-ro 23beon-gil, Daedeok-gu	Noodles in Black Bean Sauce, Spicy Seafood Noodle Soup	931-4158

Restaurants

Name	Location	Type of Food	Contact
The Lee's	34-8, Naengcheon-ro, Dong-gu	Mexican food, Brazilian food	283-9922
Chao Chao	11, hannam-ro, Dong-gu	Chinese food	623-9295
Bokroksu	814, Gyeryong-ro, Jung-gu	Chinese food	551-4441
Jungguk Daebanjeom	6, Daeheung-ro 165beon-gil, Jung-gu	Chinese food	257-8400
Man Da Rin	24, Sanseong-ro, Jung-gu	Chinese food	587-8878
Hirakbanjeom	21, Jungang-ro 129beon-gil, Jung-gu	Chinese food	256-0273
Mr. Wang (Taepyeong Branch)	1561, Gyebaek-ro, Jung-gu	Chinese food	320-9999
Manna (Daeheung Branch)	138, Daeheung-ro Jung-gu	Korean food	254-2540
Tae Won	19, Munjeong-ro, Seo-gu	Chinese food	488-8838
Dong Cheon Hong	25, Cheongsu-ro 123beon-gil, Seo-gu	Chinese food	482-6267
Cheonnyeon ui Jeongwon	1st&2nd Fl., 18-13, Mannyeon-ro 67beon-gil, Seo-gu	Chinese food	485-1796
Dong Bang Myung Ju	3rd Fl., 15, Munye-ro, Seo-gu	Chinese food	486-3888
INDY	B Bldg, Nexus Valley, 246, Daedeok-daero, Seo-gu	Indian food	471-7052
Jayu Daebanjeom	28, Dunsan-ro 137beon-gil, Seo-gu	Chinese food	472-5605
Chinese Fine Dining Chung (Galleria)	11th Fl., 211, Daedeok-daero, Seo-gu	Chinese food	010-9082-1312
Jeongwon	2nd Fl., 17, Dunsanjung-ro 137beon-gil, Seo-gu	Chinese food	364-7744
Hyangmigak	1st Fl., 335, Dosan-ro, Seo-gu	Chinese food	536-8252

Name	Location	Type of Food	Contact
Chinese Dining Ee Song Hak	11th Fl., 211, Daedeok-daero, Seo-gu	Chinese food	720-6094
Cheonnnyeongak	1st Fl., 78, Jijokbuk-ro 66beon-gil, Yuseong-gu	Chinese food	826-8388
Mara Gongbang	2nd Fl., 19, Expo-ro 151beon-gil, Yuseong-gu	Chinese food	721-5334
Meiwei China	74, Jijokbuk-ro, Yuseong-gu	Chinese food	823-1006
Dong Bo Sung	11-8, Yuseong-daero 1184beon-gil, Yuseong-gu	Chinese food	863-1010
Yeon rae Chun	78, Daehak-ro, Yuseong-gu	Chinese food	825-1177
Lee Hwa Woon	32, World Cup-daero, Yuseong-gu	Chinese food	823-0022
Baek Ri Hyang	581, Bugyuseong-daero, Yuseong-gu	Chinese food	823-2558
Liwon	2nd Fl., 155, Techno jungang-ro, Yuseong-gu	Chinese food	671-8888
Ungbiseong	12-8, Daedeok-daero 590beon-gil, Yuseong-gu	Chinese food	861-0861
Leenchai	34, Eungubi-ro 155beon-gil, Yuseong-gu	Chinese food	824-4499
INDY (Techno Valley)	2nd Fl., 32, Techno jungang-ro, Yuseong-gu	Indian food	936-7052
Venice Restaurant	23rd Fl., 31, Daehak-ro, Yuseong-gu	Western food	825-2277
Outback Steakhouse (Hyundai Outlet)	3rd Fl., 123, Techno jungang-ro, Yuseong-gu	Western food	332-2840
Chin Chin Yangkkochi (Songchon)	26, Songchonbuk-ro 20beon-gil, Daedeok-gu	Chinese food	633-3315
Kkongttu	111, Sintanjin-ro 36beon-gil, Daedeok-gu	Chinese food	483-9999

Student Group Accommodations

Name	Location	Capacity	Fee	Contact
Daejeon Youth Training Village	131, Bangami-ro, Jung-gu	496	KRW 6,000	285-0350
Dong-gu Youth Training in Nature	123, Sannae-ro 474beon-gil, Dong-gu	200	KRW 75,000 (5-person room)	274-2270
Maninan Green Training Center	106, Sannae-ro, Dong-gu	150	for a 4-person room (weekdays) KRW 44,000 for 6-person room (weekdays) KRW 75,000	270-8651
Hyo Culture Village	47, Ppurigongwon-ro, Jung-gu	150	Family room (2-4) KRW 42,000 Group room (5-8) KRW 68,000	288-8220
Gyeongha Spa Hotel	30, Oncheon-ro 101beon-gil, Yuseong-gu	300	Contact	822-5656

Hotels

Name	Location	Level	No. of Rooms	Contact
Hotel Sunshine	1700, Dongseo-daero, Dong-gu	2	55	620-6500
Belleza Hotel	46-8, Dongseo-daero 1683beon-gil, Dong-gu	-	83	622-4500
Benikea Hotel Daelim	50, Daejong-ro 505 beon-gil, Jung-gu	2	44	251-9500
The Empress Hotel	29-20, Hanbat-daero 570beon-gil, Seo-gu	2	60	485-3030
I Hotel	27-5 Expo-ro 123beon-gil, Yuseong-gu	-	80	865-2500
Hotel Interciti (closed until July 2023)	92, Oncheon-ro, Yuseong-gu	4	204	600-6000
Hotel ICC	55, EXPO-ro 123 beon-gil, Yuseong-gu	3	79	866-5000
Techno Valley Hotel	57, Techno-jungang-ro, Yuseong-gu	-	74	671-0500
Lotte City Hotel Daejeon	33, EXPO-ro 123 beon-gil, Yuseong-gu	4	306	333-1000
Naborn S & Hotel	69, Techno jungang-ro, Yuseong-gu	2	75	936-1500
Gyeongha Spa Hotel	30, Oncheon-ro 101 beon-gil, Yuseong-gu	2	40	822-5656
Gyeryong Spatel	81, Oncheon-ro, Yuseong-gu	3	143	602-1111
Hotel Sky Park	161, Techno jungang-ro, Yuseong-gu	3	100	323-4500
Shinsegye Central City Hotel Onoma	1, Expo-ro, Yuseong-gu	5	171	259-8007

Sightseeing Souvenir and Shopping Information

Craftwork Selling Store Underground Shopping Mall at Daejeon Station



This store sells metal crafts, leather products, clay crafts, wood crafts, traditional Korean dolls, and other souvenirs.

- T** 042) 863-7686
- A** Underground shopping complex in Jung-dong, Dong-gu
- B** Get off the bus 201, 202, 613, 615, 622, 2002 at Mokcheok Bridge
Get off the bus 20, 103, 311, 313, 511, 514, 107, 201, 202, 2002 at Daejeon station

Local Products Selling Store at City Hall TJ Mart www.daejeon.go.kr



This store displays and advertises outstanding local products. It sells all products at a low price without having to go through distribution channels.

- T** 042) 270-2316
- A** Daejeon City Hall, 100, Dunsan-ro, Seo-gu
- H** Monday-Thursday 9 a.m.-7 p.m., Friday 9 a.m.-6:30 p.m.
- B** Get off the bus 104, 106, 316, 617, 703, 705, 911, 918 at Daejeon City Hall
- S** Get off the subway Sicheong Station, Exit 2.

KULJAMDOSHI Daejeon Brand Store



A store to promote the story of Daejeon's transformation from a "city of nojam (no fun)" to a "city of kuljam (lots of fun)." It features unique media art and attractive goods using Kumdori, the mascot of Daejeon.

- T** 042) 607-8707
- A** 7th Fl., Shinsegae Art & Science Gallery, 516, Daedeok-daero, Yuseong-gu
- H** Monday-Thursday 10:30~20:00, Friday-Sunday 10:30~20:30
- B** Get off the bus 121, 705, 707, 911 at Shinsegae Department Store / Get off the bus 301, 318, 606, 918, 1001 at Expo Art Hall / 104, 121, 604 National Science Museum

Daejeon Travel Lounge https://www.instagram.com/travellounge_dj/



This place is where you can buy original souvenirs of Daejeon, such as those made by winners of the Daejeon Souvenir Contest. The products on display are manufactured in small quantity to develop the city's souvenirs and frequently changed according to consumers' preference.

T 042) 226-8410

A 187-1, Jungang-ro, Dong-gu

H 09:00~21:00 (open all year round. closed on Lunar New Year and Chuseok)

B Get off the bus 314, 613, 614 at Mokcheok Bridge

S Get off the subway Daejeon Station, Exit 2. Walk 5 min

Kkumdoli House



The Kkumdoli House, created using the Kkum Family worldview and has a Kkum character theme, sells popular Kkumdoli character goods, operates a Kkum Lounge, VR tour drive, and media art experience center.

T 042) 252-9926

A 3, 203beon-gil (Jung-dong 62-5), Jungang-ro, Dong-gu

H Tuesday~Sunday 11:00~19:00 (closed every Monday, 3 days off for Lunar New Year and Chuseok)

B Get off the bus 314, 613, 614 at Mokcheok Bridge

S Get off the subway Daejeon Station, Exit 2. Walk 4 min

Kkumdoli and Daejeon Travel



It's the beginning and end of your trip to Daejeon. You can find tourist information as well as souvenirs featuring Daejeon's representative characters, the Kkum Family.

T 042) 221-1905

A 3rd., welcome room at Daejeon Station

H 09:00~21:00 (open all year round. closed on Lunar New Year and Chuseok)

B Get off the bus 102, 317, 512, 606, 611, 614, 616, 622 at Daejeon Station

S Get off the subway Daejeon Station, Exit 4.

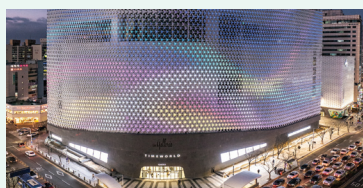
Department Stores and Large discount stores

	Name	Location	Contact
Department Store	Galleria Time World	211, Daedeok-daero, Seo-gu	480-5000
	Lotte Department Daejeon Branch	598, Gyeryong-ro, Seo-gu	1577-0001
	Daejeon Shinsegye Art & Science	1, Expo-ro, Yuseong-gu	1588-1234
	Hyundai Premium Outlet Daejeon Branch	123, Techno jungang-ro, Yuseong-gu	332-2233
	NC Department Store (Yuseong Branch)	119, Gyeryong-ro, Yuseong-gu	332-0000
	NC Department Store (Jungang-ro Branch)	141, Jungang-ro, Jung-gu	718-2400
Fashion Outlet	SAVE ZONE	201, Dunsan-ro, Seo-gu	479-9000
	Fashion Island	72, Euneosong-ro, Dong-gu	280-9000
	Moda Outlet Daejeon Branch	5, Daejeong-ro, Yuseong-gu	546-0363
Large discount stores	E-mart Traders Wolpyeong Branch	580, Hanbat-daero, Seo-gu	718-1234
	E-mart Dunsan Branch	41, Dunsanbuk-ro, Seo-gu	479-1234
	Lotte Mart Seodaejeon Branch	26-37, Yuseong-daero, Yuseong-gu	540-2500
	Homeplus Yuseong Branch	502, Hanbat-daero, Yuseong-gu	841-2080
	Lotte Mart Daedeok Branch	14, Techno jungang-ro, Yuseong-gu	930-2500
	Lotte Mart Noeun Branch	206, Bugyuseong-daero, Yuseong-gu	525-2500
	Costco Daejeon Branch	41, Oryu-ro, Jung-gu	1899-9900
	Homeplus Munhwa Branch	1690, Gyebaek-ro, Jung-gu	226-2080
	Homeplus Gao Branch	72, Euneosong-ro, Dong-gu	281-8000
	E-mart Express Bus Terminal Branch	1689, Dongseo-daero, Dong-gu	615-1234

NC Department Store
(Yuseong Branch)

Lotte
Department
Store


Daejeon Shinsegye Art & Science



Galleria Time World

Traditional Market

	Name	Location	Contact
Dong-gu	Jungang Mega Plaza	18, Daejeon-ro 779beon-gil, Dong-gu	253-1550
	Sinjangang	85, Jungang-ro 200beon-gil, Dong-gu	256-2157
	Jungang Wholesale	73, Jungang-ro 200beon-gil, Dong-gu	257-7093
	Jungang Market	119, Junggyo-ro, Dong-gu	257-3713
	Free wholesale	36, Jungang-ro 200beon-gil, Dong-gu	226-0706
	Jungang Arcade	37, Daejeon-ro 797beon-gil, Dong-gu	252-3186
	Hwalseonghwa Guyeok	783, Daejeon-ro, Dong-gu	226-0319
	Indong	701-9, Daejeon-ro, Dong-gu	284-6045
	Daejeon Acade	185, Chungmu-ro, Dong-gu	284-6562
	Yeokjeon	34, Yeokjeonsijang-gil, Dong-gu	273-9275
	Yeokjeon underground shopping mall	200, Jungang-ro, Dong-gu	221-3628
	Sindo	105, Biraeseo-ro 42beon-gil, Dong-gu	622-7078
	Yongun	5, Yongun-ro 164beon-gil, Dong-gu	271-8633
	Gayang	18, Maebong-ro, Dong-gu	672-3783
Jung-gu	Jungangno underground shopping mall	B145 Jungang-ro, Jung-gu	252-2064
	Munchang	23, Bomun-ro 20beon-gil, Jung-gu	272-8903
	Taepyeong	56, Suchim-ro 55beon-gil, Jung-gu	536-8260
	Yucheon	113, Munhwa-ro 105beon-gil, Jung-gu	584-1670
	Oryu	78, Gyeryong-ro 882beon-gil, Jung-gu	531-8920
	Yongdu	55, Gyeryong-ro 881beon-gil, Jung-gu	222-7364
	Sanseong	21-12, Daedunsan-ro 408beon-gil, Jung-gu	581-8862
	Busa	13, Bomun-ro 48beon-gil, Jung-gu	221-6664
Seo-gu	Euneunjeongi Cultural Street	170, Jungang-ro, Jung-gu	226-9100
	Hanmin	94, Gajang-ro, Seo-gu	522-9094
	Gasuwon Arcade	1369-22, Beolgok-ro, Seo-gu	543-1005
Yuseong-gu	Domakeun	120, Doma 2-gil, Seo-gu	531-8889
	Yuseong	24, Yuseong-daero 730beon-gil, Yuseong-gu	822-2472
Daedeok-gu	Songgang	74-7, Gujeuk-ro, Yuseong-gu	934-4878
	Jungni	26, Jungnibuk-ro 31beon-gil, Daedeok-gu	623-1040
	Beopdong	22, Gyejoksan-ro 5beon-gil, Daedeok-gu	635-6671
	Ojeongdong Arcade	155, Hanbat-daero 1003beon-gil, Daedeok-gu	622-3387
	Sintanjin	Seokbong-ro 37beon-gil, Daedeok-gu	936-0606
	Songchon	83, Dongchundang-ro, Daedeok-gu	633-2188



Jungang Market



Yuseong Five-day Market
(4th and 9th of each month)



Sintanjin Five-day Market
(3rd and 8th of each month)

Tour Information of Daedeok R&D Special District

Daejeon
Science Tour

Government Research Center

Organization	Field Trip Content	Application
The INNOPOLIS Foundation T. 865-8800	<ul style="list-style-type: none"> · Watch a promotional film · Visit to the information hall 	<ul style="list-style-type: none"> · Apply via phone or e-mail · Groups of over 10
Korea Advanced Institute of Science & Technology (KAIST) T. 350-2296	<ul style="list-style-type: none"> · Watch a promotional film · View models of research outcomes 	<ul style="list-style-type: none"> · Apply via e-mail · Groups of 20-50
Korea Research Institute of Standards & Science T. 868-5593	<ul style="list-style-type: none"> · Lectures on standards · Measurement experience · Watch <i>Newton's Apple Tree</i> 	<ul style="list-style-type: none"> · Apply online · Groups of elementary students in 4th grade or higher
Korea Atomic Energy Research Institute T. 868-2798,4425	<ul style="list-style-type: none"> · Watch a promotional film · Visit the exhibition hall and research facilities 	<ul style="list-style-type: none"> · Apply online · Groups of elementary students in 5th grade or higher
Electronics & Telecommunications Research Institute T. 860-6204,3913	<ul style="list-style-type: none"> · Watch a promotional film · Visit the exhibition halls and watch demonstrations 	<ul style="list-style-type: none"> · Apply online · Groups of elementary students in 4th grade or higher
Korea Institute of Energy Research T. 860-3361	<ul style="list-style-type: none"> · Listen to research performance report and watch a promotional film 	<ul style="list-style-type: none"> · Apply online · Individuals or Groups of elementary students in 4th grade or higher
Korea Institute of Machinery & Materials T. 868-7269	<ul style="list-style-type: none"> · Watch a promotional film · Visit the promotion hall · Maglev train ride 	<ul style="list-style-type: none"> · Apply online · Individuals or Groups · Groups of elementary students in 4th grade or higher
Korea Institute of Science and Technology Information T. 869-0964	<ul style="list-style-type: none"> · Watch a promotional film · Visit Super Computer 4, the science & technology research network promotion hall 	<ul style="list-style-type: none"> · Apply online · Groups of less than 10 elementary students in 4th grade or higher
Korea Research Institute of Chemical Technology T. 860-7114	<ul style="list-style-type: none"> · Watch a promotional film · Visit the promotion hall and listen to special lecture 	<ul style="list-style-type: none"> · Apply online · Groups of elementary students in 4th grade or higher
Korea Research Institute of Bioscience and Biotechnology T. 860-4736	<ul style="list-style-type: none"> · Watch a promotional film; visit the promotion hall and research facilities 	<ul style="list-style-type: none"> · Apply online · Groups of elementary students in 5th grade or higher · Individual tour temporarily open on vacation
Korea Institute of Toxicology T. 610-8167	<ul style="list-style-type: none"> · Watch a promotional film · Tour research labs 	<ul style="list-style-type: none"> · Apply online · Groups of 10-30 middle school students
Korea Basic Science Institute T. 865-3500	<ul style="list-style-type: none"> · Watch a promotional film · Watch a promotional film and tour labs 	<ul style="list-style-type: none"> · Apply online · Individuals or Groups of elementary students in 3rd grade or higher
Korea Aerospace Research Institute T. 860-2114	<ul style="list-style-type: none"> · Tour the promotion halls, satellites test and demonstration 	<ul style="list-style-type: none"> · Apply online · Individuals or Groups of elementary students in 3rd grade or higher
National Fusion Research Institute T. 879-6000	<ul style="list-style-type: none"> · Watch a promotional film · Tour research facilities 	<ul style="list-style-type: none"> · on the blog of the institute https://fusionnow.kfe.re.kr/ · Groups of 20-40
National Nano Fab Center T. 366-2061	<ul style="list-style-type: none"> · Visit the National Nano Fab Center 	<ul style="list-style-type: none"> · College students or those who work in the related fields
Korea Institute of Oriental Medicine T. 868-9516	<ul style="list-style-type: none"> · Visit the Museum of Korean Medical History · Visit the Oriental Medicine and Science Hall and the Indigenous Medicinal Herb Specimens Museum 	<ul style="list-style-type: none"> · Apply via phone or online · Groups of 10-30

Fee & Operation Hours

Name	Open Hours & Closed Days	Fee		
		Adults	Adolescents	Children
National Science Museum T. 601-7979	9:30 a.m.-5:50 p.m. Closed: Monday, New Year's Day, Seollal, Chuseok	Free (excluding Science Alive Discovery Center, Planetarium, Maglev Train, KkumAty Hall)		
Creative Invention Experience Center (International Intellectual Property Training Institute) T. 601-4396	9:30 a.m.-5:30 p.m. / Closed: Monday, holidays Group reservation: online (at least 2 days ahead)	Free		
Daejeon Observatory T. 863-8763	2 p.m.-10 p.m. Closed: Monday, New Year's Day, the next day of holiday, Seollal and Chuseok holidays Group reservation: online	Free		
Expo Science Park T. 250-1111	9:30 a.m.-5:40 p.m. (last admission 5:20 p.m.) Closed: Monday, New Year's Day, Seollal, Chuseok	Free		
Geological Museum T. 868-3798	10 a.m.-5 p.m. (last admission 4:30 p.m.) Group reservation: online Closed: Monday, the next day of holiday, New Year's Day, Seollal and Chuseok holidays, temporary holidays	Free		
Currency Museum T. 870-1200	10 a.m.-5 p.m. Closed: Monday, New Year's Day, Seollal and Chuseok holidays, temporary holidays Group reservation: online (at least 2 days ahead)	Free		
Solomon Law Park T. 323-8820	10 a.m.-5 p.m. Closed: Monday, New Year's Day, Seollal and Chuseok holidays Group reservation: online	Free		
Daejeon Traffic Culture Institute T. 250-1445-6	10 a.m.-5 p.m. Closed: Monday, New Year's Day, Seollal, Chuseok Experience reservation: online, phone (at least 7 days ahead)	3,000	2,000	2,000
Daejeon Children Center T. 824-5500	10 a.m.-5:30 p.m. Closed: Monday, New Year's Day, Seollal, Chuseok Experience Zone reservation: 042) 824-5500 Musical reservation: 042) 824-5250 Experience reservation: online	1,500	3,000	3,000
		Admission fee of Experience Zone		
		※ Experience fees vary according to programs.		
Daejeon Prehistoric Museum T. 270-8641	10 a.m.-7 p.m. (summer), 10 a.m. - 6 p.m. (winter) Closed: Monday, New Year's Day, Seollal, Chuseok (If Monday is the holiday, it is closed on the next day as well.)	Free		
Daejeon Museum of Art T. 120/270-7378	10 a.m.-7 p.m. (summer), 10 a.m. - 6 p.m. (winter) Closed: Monday, New Year's Day, Seollal, Chuseok (If Monday is the holiday, it is closed on the next day as well.)	500	300	300
Lee Ungno Museum T.611-9800	10 a.m.-7 p.m. (summer), 10 a.m. - 6 p.m. (winter) Closed: Monday, New Year's Day, Seollal, Chuseok (If Monday is the holiday, it is closed on the next day as well.)	500	300	300

Name	Open Hours & Closed Days		Fee		
			Adults	Adolescents	Children
Yeojin Museum of Buddhist Arts T. 934-8466	9 a.m.-5:30 p.m. Closed: New Year's Day, Seollal, Chuseok, holidays, weekend		Free		
Natural Heritage Center T. 610-7610	(Summer) 9:30 a.m.-5:30 p.m. (Winter) 10 a.m.-5 p.m. Closed: Monday, New Year's Day, Seollal, Chuseok		Free		
Hanbat Museum of Education T. 670-2200	9 a.m.-6 p.m. Closed: New Year's Day, Seollal, Chuseok		Free		
Daejeon Ppuri Park T. 288-8310	(Summer) 6 a.m.-10 p.m. (Winter) 7 a.m.-9 p.m. Open throughout the year		Free		
Daejeon Municipal Museum T. 270-8600	(Summer) 10 a.m.-7 p.m. (Winter) 10 a.m.-6 p.m. Closed: Monday, New Year's Day, Seollal, Chuseok, the day designated by the director * If Monday is the holiday, it is closed on the next day as well.		Free		
Gapcheon Water Sports Center T. 472-3047	1 p.m.-7 p.m. Closed: Monday		5,000	4,000	3,000
			Motor boat KRW 30,000		
Daecheong Water Sports Center T. 932-7330	10 a.m.-6 p.m. *1 hour/time *For elementary students or older only (children under 7 should be accompanied by a guardian.)	Water bike	KRW 12,000 for 2 persons		KRW 15,000 for 3 persons
		Kayak	11,000	5,500	
		Swan boat	KRW 8,000 for 2 persons	KRW 10,000 for 3 persons	KRW 12,000 for 4 persons
		Bumper board	KRW 15,000 (per unit/up to 2 people)		
Daejeon O-World T. 580-4820	Jan.-Dec. 9:30 a.m.-6 p.m. May-Oct. open on Weekend, holidays (9:30 a.m.-8 p.m.) 30 days in July-Aug. open at night (9:30 a.m.-10 p.m.) Open throughout the year		Ticket		
			17,000	13,000	10,000
			One-day ticket		
			34,000	28,000	25,000
			Night Universe		
			13,000	10,000	8,000

※ Summer season:Mar.-Oct./Winter season:Nov.-Feb.

※ Please contact us in person for group or other detailed fees.

Cultural Facilities Information

Museum

Name	Location	Area (㎡)	Collection	Contact
Yetteo Folks Museum	321-35, Sannae-ro, Dong-gu	158	50,000 Folk and archaeological pieces	274-0016
Hanbat Museum of Education	96 Uam-ro, Dong-gu	1,937	22,807 Education materials by era	670-2200
Daejeon University Museum	62, Daehak-ro, Dong-gu	1,791	5,867 Paintings, writings, porcelain, printing blocks	280-2691~2
Korea Genealogy Museum	79 Ppurigongwon-ro, Jung-gu	1,733	2,000 various genealogical documents	288-8312
Pai Chai University Museum	155-40, Baejae-ro, Seo-gu	396	1,693 phone and transmission equipments	520-5259
Currency Museum	80-67, Gwahak-ro, Yuseong-gu	2,028	111,536 various currencies from Korea and abroad	870-1200
Geological Museum	124, Gwahak-ro, Yuseong-gu	4,395	3,392 minerals, meteorites	868-3798
Daejeon Prehistoric Museum	126, Noeundong-ro, Yuseong-gu	1,226	3,500 prehistoric relics	270-8640
Daejeon Municipal Museum	398, Doan-daero, Yuseong-gu	4,996	48,000 Cultural heritage and artifacts items	270-8600
Korea Institute of Oriental Medicine History of Oriental Medicine Museum	1672, Yuseong-daero, Yuseong-gu	93.6	850 documents related to oriental medicine	868-9516
Chungnam University National History Museum	99, Daehak-ro, Yuseong-gu	350	3,620 geological, biological items	821-5292
Hannam University Central Museum	70, Hannam-ro, Daedeok-gu		7,000 phone and transmission equipments	629-7697
Hannam University Natural History Museum	70, Hannam-ro, Daedeok-gu	1,018	200,000 geology, minerals	629-7699
Daechong Dam Water Culture Center	618-136, Daechong-ro, Daedeok-gu	1,431	144 items in Water Resource Hall, Ecology Hall	930-7332

Movie Theater

Name	Contact
Megabox Daejeon	1544-0070
Megabox Yuseong	
Megabox Jungang-ro	
Megabox Hyundai Outlet	
Megabox Shinsegye	
Lotte Cinema Daejeon	1544-8855
Lotte Cinema Daejeon Dunsan	
Lotte Cinema Daejeon Gwanjeo	
Lotte Cinema Daejeon Central	

Name	Contact
CGV Daejeon Terminal	1544-1122
CGV Daejeon Gao	
CGV Daejeon	
CGV Daejeon Gasuwon	
CGV Yuseong Noeun	
CGV Daejeon Tanbang	472-1138
Daejeon Art Cinema	
Cine Indie U	
Soso Art Cinema	331-1895 864-1895
	623-1623

Culture Center

Name	Contact
Dong-gu Culture Center	623-7211
Jung-gu Culture Center	256-3684
Seo-gu Culture Center	488-5474
Yuseong Culture Center	823-3915
Daedeok Culture Center	627-7517

Art Museum

Name	Contact
Daejeon Museum of Art	042-120, 270-7371
Lee Ungno Museum	611-9800
Yeojin Museum of Buddhist Arts	934-8466

